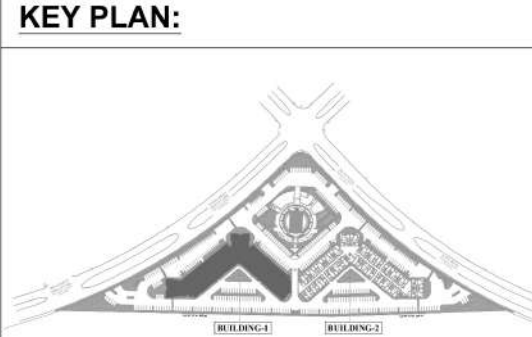


- LEVEL 1 FLOOR PLAN (BUILDING 1)  
SCALE: 1/16"=1'-0"
- Wall Type W13R1
  - Wall Type W9R1
  - Wall Type W8R2
  - Wall Type W10R2
  - Wall Type W8R3
  - Wall Type W8R3
  - Wall Type W8R3
  - Wall Type W4N6
  - Wall Type W4N6
  - Wall Type W8R3
  - Wall Type W4N6
  - Wall Type W4R6
  - Wall Type W6N6
  - Wall Type W6N6
  - Wall Type W6N6
  - Wall Type W8R3
  - Wall Type W8R4
  - Wall Type W4N6
  - Wall Type W6N6
  - LVT Wood Plank Flooring
  - Enamel Painted Smooth Gypsum Ceiling Board
  - Wall Type W11R1
  - Wall Type W8R1
  - Unit A2A
  - Unit A2B
  - Unit A2C
  - Unit B1C
  - Unit B1B

- 109.7 FT
- 310.1 FT
- 932.6 FT
- 24.1 FT
- 534.3 FT
- 28.6 FT
- 28.3 FT
- 34.0 FT
- 56.1 FT
- 61.3 FT
- 70.6 FT
- 58.4 FT
- 133.4 FT
- 19.8 FT
- 3.5 FT
- 17.6 FT
- 12.6 FT
- 66.5 FT
- 109.4 FT
- 136.7 FT
- 6.9 FT
- 6871.1 SQ FT
- 6952.5 SQ FT
- 141.0 FT
- 25.3 FT
- 10.0 EA
- 1.0 EA
- 1.0 EA
- 12.0 EA
- 4.0 EA

- GENERAL NOTES:**
- REFER TO SHEET A042 TO A046 FOR ENLARGED UNIT PLANS, DOOR AND WINDOW TYPES AND LOCATION, BALCONY DIMENSIONS, RESIDENTIAL UNIT RCP'S, ETC.
  - REFER TO SHEET A013 FOR WALL ASSEMBLY TYPES AND ADDITIONAL INFORMATION.
  - REFER TO SHEET A084 FOR DOOR SCHEDULE. AND SHEET A087 FOR WINDOW SCHEDULE
  - ALL SLOPES TO BE 1/4" / FT UNLESS NOTED OTHERWISE.
  - REFER TO INTERIOR DRAWINGS FOR CORRIDOR LIGHTING AND FINISH SPECIFICATIONS.
  - REFER TO BUILDING AND WALL SECTIONS FINISHES.
  - REFER TO ELECTRICAL BUILDING PLANS FOR EMERGENCY AND EXIT LIGHT LOCATIONS.
  - DOOR LOCATIONS NOT DIMENSIONED SHALL BE LOCATED AT MIDPOINT OF WALL OR 4" CLEAR OF ROOM FROM ADJACENT WALL CORNER TO HINGE SIDE, TYPICAL.
  - DOORS AND WINDOWS AT UNITS PROVIDE VENTILATION FOR AT LEAST 4% OF THE FLOOR AREA.
  - ALL BALCONIES AND DECKS SHALL HAVE SPRINKLER PROTECTION.
  - REFER TO LANDSCAPE DRAWINGS FOR GROUND FLOOR YARD FENCING.

- LEGEND**
- CMU WALL
  - 2 HOUR FIRE RATED WALL
  - HARRIS COUNTY ENGINEERING DEPARTMENT - PERMITS OFFICE  
REVIEWED FOR CODE COMPLIANCE  
Reviewer: S. Vaughn  
All code deficiencies found in the field shall be corrected and made compliant prior to the Certificate Of Compliance being issued.  
04/12/2024 2:01:53 PM
  - WALL PARTITION
  - DOOR TYPE
  - WINDOW TYPE
  - SECTION MARK
  - FEC FIRE EXTINGUISHER CABINET
  - FDC FIRE DEPARTMENT CONNECTION
  - FHR FIRE HOSE REEL CABINET.

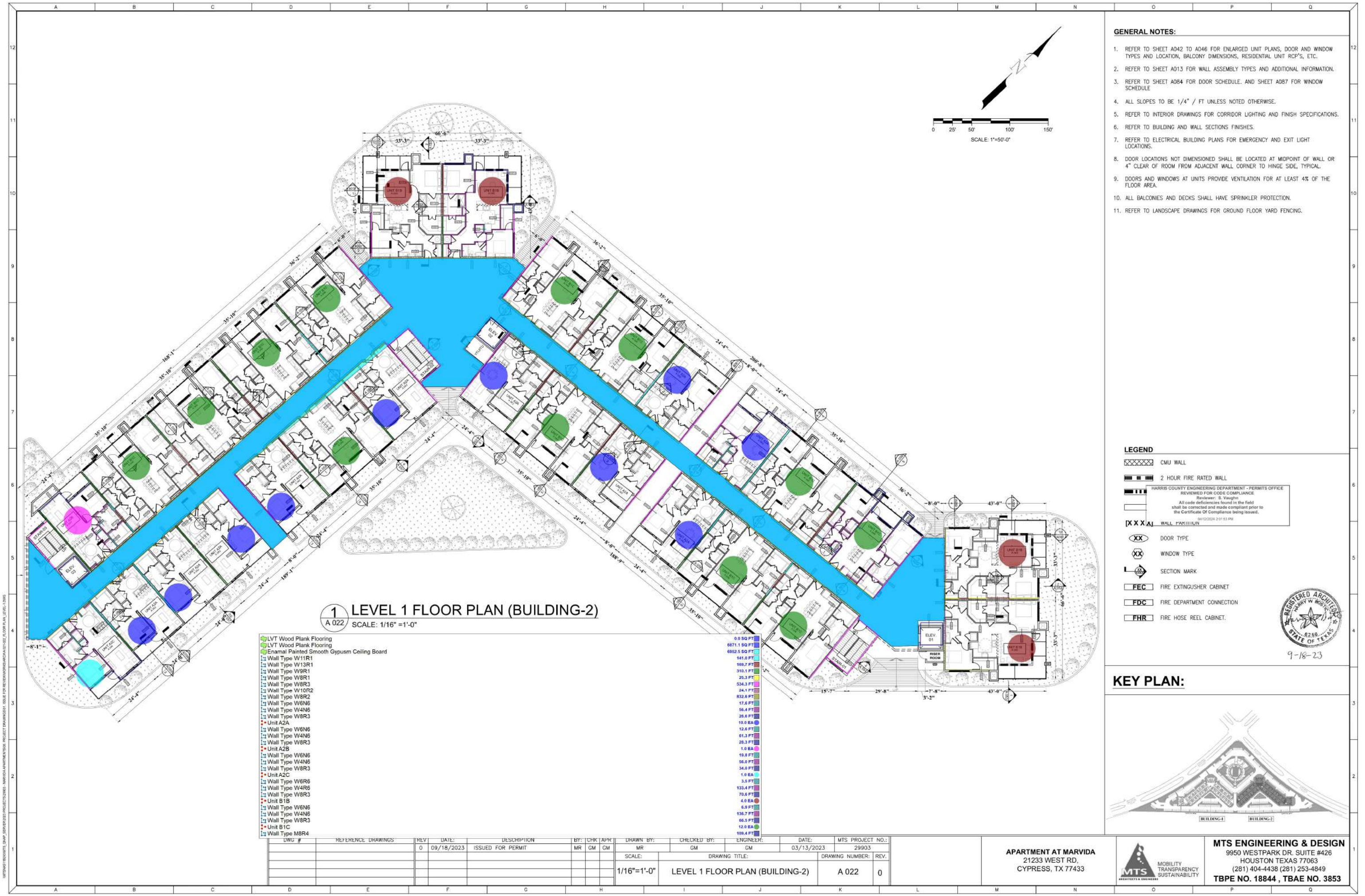


DWG #	REFERENCE DRAWINGS	REV	DATE	DESCRIPTION	BY	CHK	APR	DRAWN BY	CHECKED BY	ENGINEER	DATE	MTS PROJECT NO.
		0	09/18/2023	ISSUED FOR PERMIT	MR	GM	GM	MR	GM	GM	03/13/2023	29903
								SCALE:				
								1/16"=1'-0"				
										DRAWING TITLE:		
												DRAWING NUMBER: REV.
												A 021 0

**APARTMENT AT MARVIDA**  
21233 WEST RD.  
CYPRESS, TX 77433

**MTS ENGINEERING & DESIGN**  
9950 WESTPARK DR. SUITE #426  
HOUSTON TEXAS 77063  
(281) 404-4438 (281) 253-4849  
TBPE NO. 18844, TBAE NO. 3853





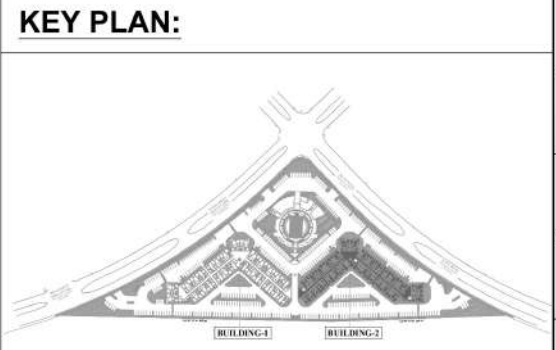
1 LEVEL 1 FLOOR PLAN (BUILDING-2)  
A 022 SCALE: 1/16"=1'-0"

- LVT Wood Plank Flooring
- Enamel Painted Smooth Gypsum Ceiling Board
- Wall Type W11R1
- Wall Type W13R1
- Wall Type W9R1
- Wall Type W8R1
- Wall Type W8R3
- Wall Type W10R2
- Wall Type W8R2
- Wall Type W6N6
- Wall Type W4N6
- Wall Type W8R3
- Unit A2A
- Unit A2B
- Unit A2C
- Unit B1A
- Unit B1B
- Unit B1C
- Unit B1D
- Unit B1E
- Unit B1F
- Unit B1G
- Unit B1H
- Unit B1I
- Unit B1J
- Unit B1K
- Unit B1L
- Unit B1M
- Unit B1N
- Unit B1O
- Unit B1P
- Unit B1Q
- Unit B1R
- Unit B1S
- Unit B1T
- Unit B1U
- Unit B1V
- Unit B1W
- Unit B1X
- Unit B1Y
- Unit B1Z
- Unit B2A
- Unit B2B
- Unit B2C
- Unit B2D
- Unit B2E
- Unit B2F
- Unit B2G
- Unit B2H
- Unit B2I
- Unit B2J
- Unit B2K
- Unit B2L
- Unit B2M
- Unit B2N
- Unit B2O
- Unit B2P
- Unit B2Q
- Unit B2R
- Unit B2S
- Unit B2T
- Unit B2U
- Unit B2V
- Unit B2W
- Unit B2X
- Unit B2Y
- Unit B2Z
- Unit B3A
- Unit B3B
- Unit B3C
- Unit B3D
- Unit B3E
- Unit B3F
- Unit B3G
- Unit B3H
- Unit B3I
- Unit B3J
- Unit B3K
- Unit B3L
- Unit B3M
- Unit B3N
- Unit B3O
- Unit B3P
- Unit B3Q
- Unit B3R
- Unit B3S
- Unit B3T
- Unit B3U
- Unit B3V
- Unit B3W
- Unit B3X
- Unit B3Y
- Unit B3Z
- Unit B4A
- Unit B4B
- Unit B4C
- Unit B4D
- Unit B4E
- Unit B4F
- Unit B4G
- Unit B4H
- Unit B4I
- Unit B4J
- Unit B4K
- Unit B4L
- Unit B4M
- Unit B4N
- Unit B4O
- Unit B4P
- Unit B4Q
- Unit B4R
- Unit B4S
- Unit B4T
- Unit B4U
- Unit B4V
- Unit B4W
- Unit B4X
- Unit B4Y
- Unit B4Z
- Unit B5A
- Unit B5B
- Unit B5C
- Unit B5D
- Unit B5E
- Unit B5F
- Unit B5G
- Unit B5H
- Unit B5I
- Unit B5J
- Unit B5K
- Unit B5L
- Unit B5M
- Unit B5N
- Unit B5O
- Unit B5P
- Unit B5Q
- Unit B5R
- Unit B5S
- Unit B5T
- Unit B5U
- Unit B5V
- Unit B5W
- Unit B5X
- Unit B5Y
- Unit B5Z
- Unit B6A
- Unit B6B
- Unit B6C
- Unit B6D
- Unit B6E
- Unit B6F
- Unit B6G
- Unit B6H
- Unit B6I
- Unit B6J
- Unit B6K
- Unit B6L
- Unit B6M
- Unit B6N
- Unit B6O
- Unit B6P
- Unit B6Q
- Unit B6R
- Unit B6S
- Unit B6T
- Unit B6U
- Unit B6V
- Unit B6W
- Unit B6X
- Unit B6Y
- Unit B6Z
- Unit B7A
- Unit B7B
- Unit B7C
- Unit B7D
- Unit B7E
- Unit B7F
- Unit B7G
- Unit B7H
- Unit B7I
- Unit B7J
- Unit B7K
- Unit B7L
- Unit B7M
- Unit B7N
- Unit B7O
- Unit B7P
- Unit B7Q
- Unit B7R
- Unit B7S
- Unit B7T
- Unit B7U
- Unit B7V
- Unit B7W
- Unit B7X
- Unit B7Y
- Unit B7Z
- Unit B8A
- Unit B8B
- Unit B8C
- Unit B8D
- Unit B8E
- Unit B8F
- Unit B8G
- Unit B8H
- Unit B8I
- Unit B8J
- Unit B8K
- Unit B8L
- Unit B8M
- Unit B8N
- Unit B8O
- Unit B8P
- Unit B8Q
- Unit B8R
- Unit B8S
- Unit B8T
- Unit B8U
- Unit B8V
- Unit B8W
- Unit B8X
- Unit B8Y
- Unit B8Z
- Unit B9A
- Unit B9B
- Unit B9C
- Unit B9D
- Unit B9E
- Unit B9F
- Unit B9G
- Unit B9H
- Unit B9I
- Unit B9J
- Unit B9K
- Unit B9L
- Unit B9M
- Unit B9N
- Unit B9O
- Unit B9P
- Unit B9Q
- Unit B9R
- Unit B9S
- Unit B9T
- Unit B9U
- Unit B9V
- Unit B9W
- Unit B9X
- Unit B9Y
- Unit B9Z
- Unit B10A
- Unit B10B
- Unit B10C
- Unit B10D
- Unit B10E
- Unit B10F
- Unit B10G
- Unit B10H
- Unit B10I
- Unit B10J
- Unit B10K
- Unit B10L
- Unit B10M
- Unit B10N
- Unit B10O
- Unit B10P
- Unit B10Q
- Unit B10R
- Unit B10S
- Unit B10T
- Unit B10U
- Unit B10V
- Unit B10W
- Unit B10X
- Unit B10Y
- Unit B10Z
- Unit B11A
- Unit B11B
- Unit B11C
- Unit B11D
- Unit B11E
- Unit B11F
- Unit B11G
- Unit B11H
- Unit B11I
- Unit B11J
- Unit B11K
- Unit B11L
- Unit B11M
- Unit B11N
- Unit B11O
- Unit B11P
- Unit B11Q
- Unit B11R
- Unit B11S
- Unit B11T
- Unit B11U
- Unit B11V
- Unit B11W
- Unit B11X
- Unit B11Y
- Unit B11Z
- Unit B12A
- Unit B12B
- Unit B12C
- Unit B12D
- Unit B12E
- Unit B12F
- Unit B12G
- Unit B12H
- Unit B12I
- Unit B12J
- Unit B12K
- Unit B12L
- Unit B12M
- Unit B12N
- Unit B12O
- Unit B12P
- Unit B12Q
- Unit B12R
- Unit B12S
- Unit B12T
- Unit B12U
- Unit B12V
- Unit B12W
- Unit B12X
- Unit B12Y
- Unit B12Z

- 0.0 SQ FT
- 6671.1 SQ FT
- 6652.5 SQ FT
- 141.0 FT
- 168.7 FT
- 310.1 FT
- 25.3 FT
- 534.3 FT
- 24.1 FT
- 832.6 FT
- 17.6 FT
- 56.4 FT
- 26.6 FT
- 10.0 EA
- 12.6 FT
- 61.3 FT
- 28.3 FT
- 1.0 EA
- 19.8 FT
- 56.0 FT
- 34.0 FT
- 1.0 EA
- 3.5 FT
- 132.4 FT
- 70.6 FT
- 4.0 EA
- 6.9 FT
- 136.7 FT
- 66.5 FT
- 12.0 EA
- 108.4 FT

- GENERAL NOTES:**
1. REFER TO SHEET A042 TO A046 FOR ENLARGED UNIT PLANS, DOOR AND WINDOW TYPES AND LOCATION, BALCONY DIMENSIONS, RESIDENTIAL UNIT RCP'S, ETC.
  2. REFER TO SHEET A013 FOR WALL ASSEMBLY TYPES AND ADDITIONAL INFORMATION.
  3. REFER TO SHEET A084 FOR DOOR SCHEDULE. AND SHEET A087 FOR WINDOW SCHEDULE
  4. ALL SLOPES TO BE 1/4" / FT UNLESS NOTED OTHERWISE.
  5. REFER TO INTERIOR DRAWINGS FOR CORRIDOR LIGHTING AND FINISH SPECIFICATIONS.
  6. REFER TO BUILDING AND WALL SECTIONS FINISHES.
  7. REFER TO ELECTRICAL BUILDING PLANS FOR EMERGENCY AND EXIT LIGHT LOCATIONS.
  8. DOOR LOCATIONS NOT DIMENSIONED SHALL BE LOCATED AT MIDPOINT OF WALL OR 4" CLEAR OF ROOM FROM ADJACENT WALL CORNER TO HINGE SIDE, TYPICAL.
  9. DOORS AND WINDOWS AT UNITS PROVIDE VENTILATION FOR AT LEAST 4% OF THE FLOOR AREA.
  10. ALL BALCONIES AND DECKS SHALL HAVE SPRINKLER PROTECTION.
  11. REFER TO LANDSCAPE DRAWINGS FOR GROUND FLOOR YARD FENCING.

- LEGEND**
- CMU WALL
  - 2 HOUR FIRE RATED WALL
  - HARRIS COUNTY ENGINEERING DEPARTMENT - PERMITS OFFICE  
REVIEWED FOR CODE COMPLIANCE  
Reviewer: S. Vaughn  
All code deficiencies found in the field shall be corrected and made compliant prior to the Certificate Of Compliance being issued.  
04/12/2024 2:01:53 PM
  - WALL PARTITION
  - DOOR TYPE
  - WINDOW TYPE
  - SECTION MARK
  - FEC FIRE EXTINGUISHER CABINET
  - FDC FIRE DEPARTMENT CONNECTION
  - FHR FIRE HOSE REEL CABINET.



UTAHNS TECHINATE, DAWP, SEPTEMBER 2023 PROJECT 21880 - MARVIDA APARTMENT 2000 PROJECT DRAWING 001 - ISSUE FOR REVIEW AND APPROVAL - FLOOR PLAN LEVEL 1

DWG #	REFERENCE DRAWINGS	REV	DATE	DESCRIPTION	BY	CHK	APP	DRAWN BY	CHECKED BY	ENGINEER	DATE	MTS PROJECT NO.
0		0	09/18/2023	ISSUED FOR PERMIT	MR	GM	GM	MR	GM	GM	03/13/2023	29903
		SCALE:		DRAWING TITLE:		DRAWING NUMBER:		REV:				
		1/16"=1'-0"		LEVEL 1 FLOOR PLAN (BUILDING-2)		A 022		0				

**APARTMENT AT MARVIDA**  
21233 WEST RD,  
CYPRESS, TX 77433

**MTS ENGINEERING & DESIGN**  
9950 WESTPARK DR. SUITE #426  
HOUSTON TEXAS 77063  
(281) 404-4438 (281) 253-4849  
**TBPE NO. 18844 , TBAE NO. 3853**







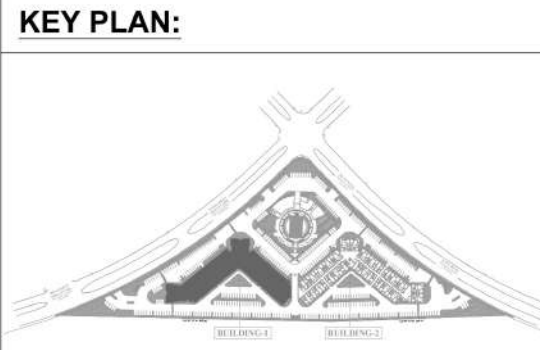






- GENERAL NOTES:**
1. REFER TO SHEET A042 TO A046 FOR ENLARGED UNIT PLANS, DOOR AND WINDOW TYPES AND LOCATION, BALCONY DIMENSIONS, RESIDENTIAL UNIT RCP'S, ETC.
  2. REFER TO SHEET A013 FOR WALL ASSEMBLY TYPES AND ADDITIONAL INFORMATION.
  3. REFER TO SHEET A084 FOR DOOR SCHEDULE, AND SHEET A087 FOR WINDOW SCHEDULE
  4. ALL SLOPES TO BE 1/4" / FT UNLESS NOTED OTHERWISE.
  5. REFER TO INTERIOR DRAWINGS FOR CORRIDOR LIGHTING AND FINISH SPECIFICATIONS.
  6. REFER TO BUILDING AND WALL SECTIONS FINISHES.
  7. REFER TO ELECTRICAL BUILDING PLANS FOR EMERGENCY AND EXIT LIGHT LOCATIONS.
  8. DOOR LOCATIONS NOT DIMENSIONED SHALL BE LOCATED AT MIDPOINT OF WALL OR 4" CLEAR OF ROOM FROM ADJACENT WALL CORNER TO HINGE SIDE, TYPICAL.
  9. DOORS AND WINDOWS AT UNITS PROVIDE VENTILATION FOR AT LEAST 4% OF THE FLOOR AREA.
  10. ALL BALCONIES AND DECKS SHALL HAVE SPRINKLER PROTECTION.
  11. REFER TO LANDSCAPE DRAWINGS FOR GROUND FLOOR YARD FENCING.

- LEGEND**
- CMU WALL
  - 2 HOUR FIRE RATED WALL
  - HARRIS COUNTY ENGINEERING DEPARTMENT - PERMITS OFFICE  
REVIEWED FOR CODE COMPLIANCE  
Reviewer: S. Vaughn  
All code deficiencies found in the field shall be corrected and made compliant prior to the Certificate Of Compliance being issued.  
04/12/2024 2:01:54 PM
  - WALL PARTITION
  - DOOR TYPE
  - WINDOW TYPE
  - SECTION MARK
  - FEC FIRE EXTINGUISHER CABINET
  - FDC FIRE DEPARTMENT CONNECTION
  - FHR FIRE HOSE REEL CABINET



DWG #	REFERENCE DRAWINGS	REV	DATE	ISS
		0	09/18/2023	ISS

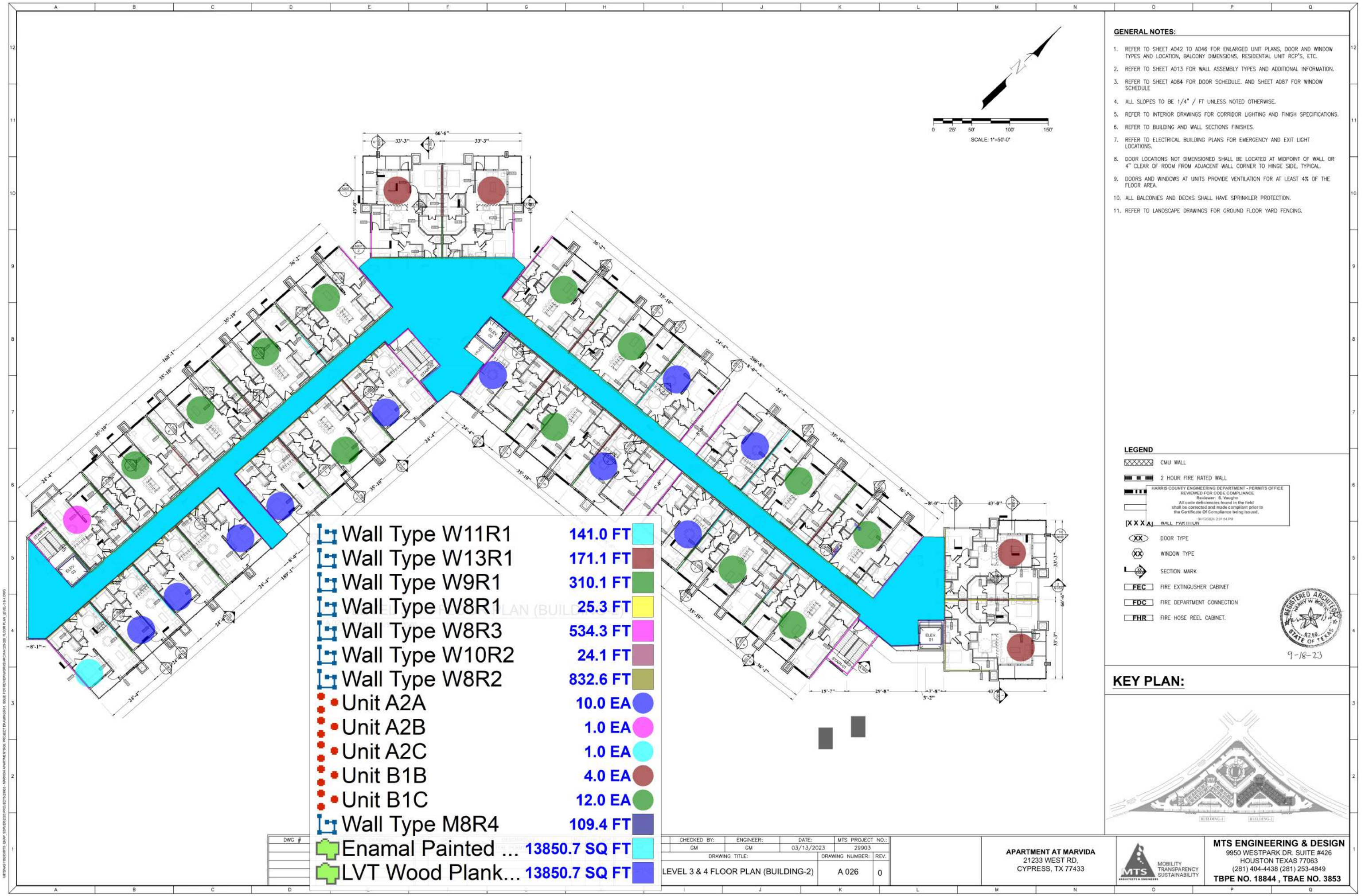
Wall Type W8R2	832.6 FT
Wall Type W10R2	24.1 FT
Wall Type W8R3	534.3 FT
Wall Type W8R1	25.3 FT
Wall Type W9R1	310.1 FT
Wall Type W13R1	169.1 FT
Wall Type W11R1	141.0 FT
Unit A2A	10.0 EA
Unit A2B	1.0 EA
Unit A2C	1.0 EA
Unit B1B	4.0 EA
Unit B1C	12.0 EA
Wall Type M8R4	109.4 FT

MTS PROJECT NO.: 29903 DRAWING NUMBER: 025 REV: 0	APARTMENT AT MARVIDA 21233 WEST RD. CYPRESS, TX 77433	<b>MTS ENGINEERING &amp; DESIGN</b> 9950 WESTPARK DR. SUITE #426 HOUSTON TEXAS 77063 (281) 404-4438 (281) 253-4849 TBPE NO. 18844, TBAE NO. 3853
---	---	--







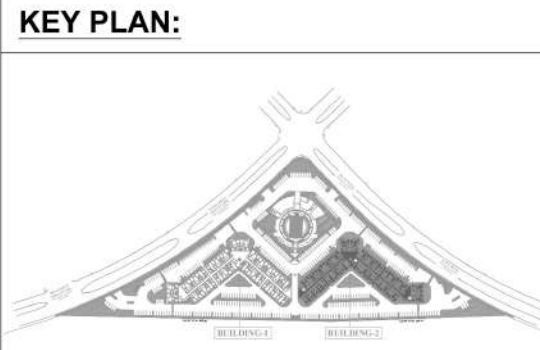


- GENERAL NOTES:**
1. REFER TO SHEET A042 TO A046 FOR ENLARGED UNIT PLANS, DOOR AND WINDOW TYPES AND LOCATION, BALCONY DIMENSIONS, RESIDENTIAL UNIT RCP'S, ETC.
  2. REFER TO SHEET A013 FOR WALL ASSEMBLY TYPES AND ADDITIONAL INFORMATION.
  3. REFER TO SHEET A084 FOR DOOR SCHEDULE, AND SHEET A087 FOR WINDOW SCHEDULE
  4. ALL SLOPES TO BE 1/4" / FT UNLESS NOTED OTHERWISE.
  5. REFER TO INTERIOR DRAWINGS FOR CORRIDOR LIGHTING AND FINISH SPECIFICATIONS.
  6. REFER TO BUILDING AND WALL SECTIONS FINISHES.
  7. REFER TO ELECTRICAL BUILDING PLANS FOR EMERGENCY AND EXIT LIGHT LOCATIONS.
  8. DOOR LOCATIONS NOT DIMENSIONED SHALL BE LOCATED AT MIDPOINT OF WALL OR 4" CLEAR OF ROOM FROM ADJACENT WALL CORNER TO HINGE SIDE, TYPICAL.
  9. DOORS AND WINDOWS AT UNITS PROVIDE VENTILATION FOR AT LEAST 4% OF THE FLOOR AREA.
  10. ALL BALCONIES AND DECKS SHALL HAVE SPRINKLER PROTECTION.
  11. REFER TO LANDSCAPE DRAWINGS FOR GROUND FLOOR YARD FENCING.

**LEGEND**

- CMU WALL
- 2 HOUR FIRE RATED WALL
- HARRIS COUNTY ENGINEERING DEPARTMENT - PERMITS OFFICE  
REVIEWED FOR CODE COMPLIANCE  
Reviewer: S. Vaughn  
All code deficiencies found in the field shall be corrected and made compliant prior to the Certificate Of Compliance being issued.  
04/12/2024 2:01:54 PM
- WALL PARTITION
- DOOR TYPE
- WINDOW TYPE
- SECTION MARK
- FEC FIRE EXTINGUISHER CABINET
- FDC FIRE DEPARTMENT CONNECTION
- FHR FIRE HOSE REEL CABINET

REGISTERED ARCHITECT  
STATE OF TEXAS  
9-18-23



Wall Type W11R1	141.0 FT
Wall Type W13R1	171.1 FT
Wall Type W9R1	310.1 FT
Wall Type W8R1	25.3 FT
Wall Type W8R3	534.3 FT
Wall Type W10R2	24.1 FT
Wall Type W8R2	832.6 FT
Unit A2A	10.0 EA
Unit A2B	1.0 EA
Unit A2C	1.0 EA
Unit B1B	4.0 EA
Unit B1C	12.0 EA
Wall Type M8R4	109.4 FT
Enamel Painted ...	13850.7 SQ FT
LVT Wood Plank...	13850.7 SQ FT

CHECKED BY: GM	ENGINEER: GM	DATE: 03/13/2023	MTS PROJECT NO.: 29903
DRAWING TITLE: LEVEL 3 & 4 FLOOR PLAN (BUILDING-2)		DRAWING NUMBER: A 026	REV: 0

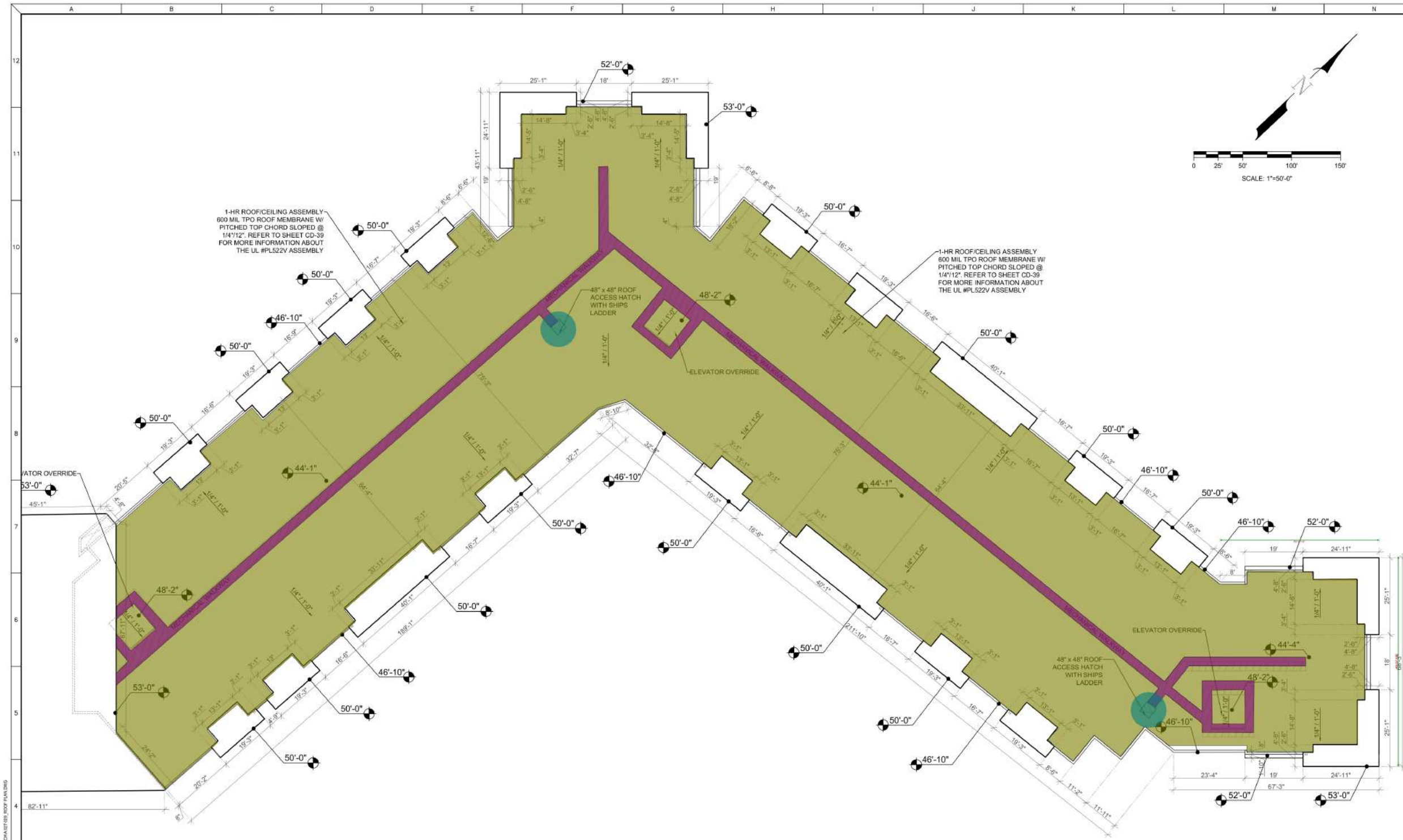
APARTMENT AT MARVIDA  
21233 WEST RD.  
CYPRESS, TX 77433

**MTS ENGINEERING & DESIGN**  
9950 WESTPARK DR. SUITE #426  
HOUSTON TEXAS 77063  
(281) 404-4438 (281) 253-4849  
TBPE NO. 18844, TBAE NO. 3853









- ### GENERAL NOTES:
- A. ROOF PENETRATIONS TO OCCUR ON FRONT AND REAR OF BUILDINGS UNO. ALL PENETRATIONS TO BE PAINTED TO MATCH ADJACENT MATERIAL.
  - B. VERIFY LOCATIONS OF ALL ROOF PENETRATIONS WITH STRUCTURAL, MECHANICAL, AND PLUMBING DRAWINGS.
  - C. ALL BUILDINGS SHALL HAVE DOWNSPOUTS PIPED TO STORM SEWER SYSTEM.
  - D. MECHANICAL SUB-CONTRACTOR TO COORDINATE INSTALLATION AND ACCEPTANCE OF PREFABRICATED CURBS AND PENETRATIONS WITH ROOF MEMBRANE SUB-CONTRACTOR. G.C. TO PROVIDE ALL BLOCKING, NAILERS, ETC. AS NECESSARY FOR A WATERTIGHT AND WATERPROOF ROOF. PROVIDE SPACE BETWEEN PENETRATIONS TO ALLOW PROPER FLASHING IT IS THE GENERAL CONTRACTOR'S RESPONSIBILITY.
  - E. TO VERIFY, COORDINATE AND/OR INSTALL ALL ADJACENT AND/OR RELATED FLASHINGS, BLOCKINGS, NAILERS, INSULATION STOPS AND CRICKET NECESSARY FOR THE COMPLETE INSTALLATION OF THE ROOF MEMBRANE WHICH ARE REQUIRED FOR A COMPLETE, WARRANTED, WATERTIGHT, WATERPROOF INSTALLATION.
  - F. ALL ROOF SLOPES ARE TO HAVE A MINIMUM 1/4" FALL WHERE CRICKET VALLEYS OCCUR. ALL CRICKETS SHALL BE A MINIMUM OF 2 TIMES THE PRIMARY SLOPE TO PROVIDE A MINIMUM OF 1/4" SLOPE IN THE VALLEY LINE ITSELF.
  - G. LOCATIONS OF ROOF ACCESSORIES AND MATERIAL ARE SCHEMATIC IN NATURE. EXACT LOCATIONS SHALL BE DETERMINED BY INFORMATION ELSEWHERE ON THE DRAWINGS.
  - H. OMISSION OF ANY ACCESSORY FROM THE ROOF PLAN SHALL NOT RELIEVE THE CONTRACTOR FROM THE RESPONSIBILITIES FOR SUCH ITEMS.
  - I. PROVIDE FLASHING AT ROOF INTERSECTION TO VERTICAL SURFACES. RUN CONTINUOUS UNDERLAYMENT.
  - J. ALL ROOF DECKING SHALL BE BONDED TO ROOF TRUSS WITH EXTERIOR GRADE CONSTRUCTION ADHESIVE AND MECHANICALLY ATTACHED.
  - K. ROOF TRUSS MANUFACTURER SHALL PROVIDE ENGINEERED, STAMPED SHOP DRAWINGS TO ARCHITECT, FOR APPROVAL PRIOR TO FABRICATION.
  - L. ROOF TRUSS MANUFACTURER SHALL COORDINATE TRUSS DESIGN WITH PLUMBING, MECHANICAL AND ELECTRICAL DRAWINGS, MAKE ANY NECESSARY ADJUSTMENTS TO ACCOMMODATE INSTALLATION OF MECHANICAL EQUIPMENT WITHIN ATTIC SPACE.
  - M. PROVIDE FALL ARREST ANCHORS OR GUARDRAILS WHERE MECH. WORK AREAS ARE LESS THAN 10'-0" FROM EDGE AND THE PARAPET IS LESS THAN 42" ABOVE THE ROOF STRUCTURE IN THAT LOCATION.
  - N. PER CODE REQ., DRAFTSTOPPING SHALL NOT IMPEDE ATTIC VENTILATION.
  - O. ATTIC SPRINKLERS SHALL PROVIDE COVERAGE WHILE MAINTAINING REQUIRED ATTIC VENTILATION PER THE CODE, WHICH MAY RESULT IN A DRY SPRINKLER SYSTEM.
  - P. PROVIDE SAND BAGS TO ELIMINATE NOISE CAUSED BY DRIPPING INSIDE D.S.
  - Q. OVERFLOW SCUPPERS TO BE 8" X 8" MIN. LOCATED AT A DISTANCE 2'-0" MIN. HORIZONTALLY FROM FACE OF MAIN THRU-WALL SCUPPER AND 2" MAX ABOVE BOTTOM OF THRU-WALL SCUPPER.
  - R. ALL ROOF CURBS TO BE A MIN. OF 8", 12" PREFERRED ABOVE FINISHED ROOF SURFACE.
  - S. FRESH AIR INTAKES TO BE 10' MIN. DISTANCE FROM SANITARY OR TRASH VENTS.
  - T. METAL COPING TO BE PRE FINISHED W/ KYMAR 500 IN A COLOR TO MATCH ADJACENT EXTERIOR FINISHED FACADE OR AS NOTED.
  - U. ALL A/C AND ROOF TOP EQUIPMENT TO BE ATTACHED TO PREFABRICATED ALUMINUM STAND ATTACHED TO ROOF STRUCTURE - SEE CURBS AND HOODS FOR A/C LINE SET PENETRATIONS AT ROOF TO PROVIDE WATER TIGHT PENETRATIONS
  - V. TPO ROOFING TO BE UL LISTED CLASS A ROOFING: BASIS OF DESIGN FIRESTONE ULTRAPLY TPO
  - W. SEE SPECIFICATION FOR ADDITIONAL INFORMATION.

- ### LEGEND:
- ROOF SLOPE 1/4" / 12" MINIMUM
  - D.S. HARRIS COUNTY ENGINEERING DEPARTMENT - PERMITS OFFICE REVIEWED FOR CODE COMPLIANCE
  - E.O.S. REVIEWER: S. VAUGHN
  - XXX SP DOWNSPOUT CAPACITY
  - RIV ROOF INTAKE VENT
  - REV ROOF EXHAUST VENT
  - +00'-00" PARAPET HEIGHT
  - ROOF ACCESS HATCH - 1 HR. RATED
  - ROOF WALK PADS
  - 0'-0" APPROX. ROOF ELEVATION
  - CONDENSERS
  - TPO MEMBRANE WALKING PATH
  - 4" HIGH X 12" WIDE SCUPPER W/PREFINISHED COLLECTOR HEAD & 6" DIA. ROUND DOWNSPOUT, TYP. AT BRICK PARAPET

1 ROOF PLAN (BUILDING -2)  
A 029 SCALE: 1/16" = 1'-0"

TPO Roof	33456.1 SQ FT
Mechanical Walkway	2021.8 SQ FT
48x48 Roof Access Hatch With Ships ...	2.0 EA

0	09/18/2023	ISSUED FOR PERMIT	MR	GM	GM	MR	GM	GM	DATE:	03/13/2023	MTS PROJECT NO.:	29903
									SCALE:	1/16" = 1'-0"	DRAWING NUMBER:	A 029
									DRAWING TITLE:	ROOF PLAN (BUILDING-2)	REV:	0

APARTMENT AT MARVIDA  
21233 WEST RD.,  
CYPRESS, TX 77433

MTS ENGINEERING & DESIGN  
9950 WESTPARK DR. SUITE #426  
HOUSTON TEXAS 77063  
(281) 404-4438 (281) 253-4849  
TBPE NO. 18844, TBAE NO. 3853





10.0 EA  
2.0 EA  
2.0 EA  
4.0 EA  
6.0 EA  
2.0 EA  
2.0 EA  
4.0 EA  
2.0 EA  
2.0 EA  
2.0 EA  
2.0 EA

DESCRIPTION	BY:	CHK:	APR:	DRAWN BY:	CHECKED BY:	ENGINEER:	DATE:	MTS PROJECT NO.:
ERMIT	MR	GM	GM	MR	GM	GM	03/13/2023	29903
				SCALE:	DRAWING TITLE:			DRAWING NUMBER: REV:
				1/4" = 1'-0"	ENLARGED FLOOR PLAN - A (LEVEL 1, BUILDING-1 & 2)			A 030 0

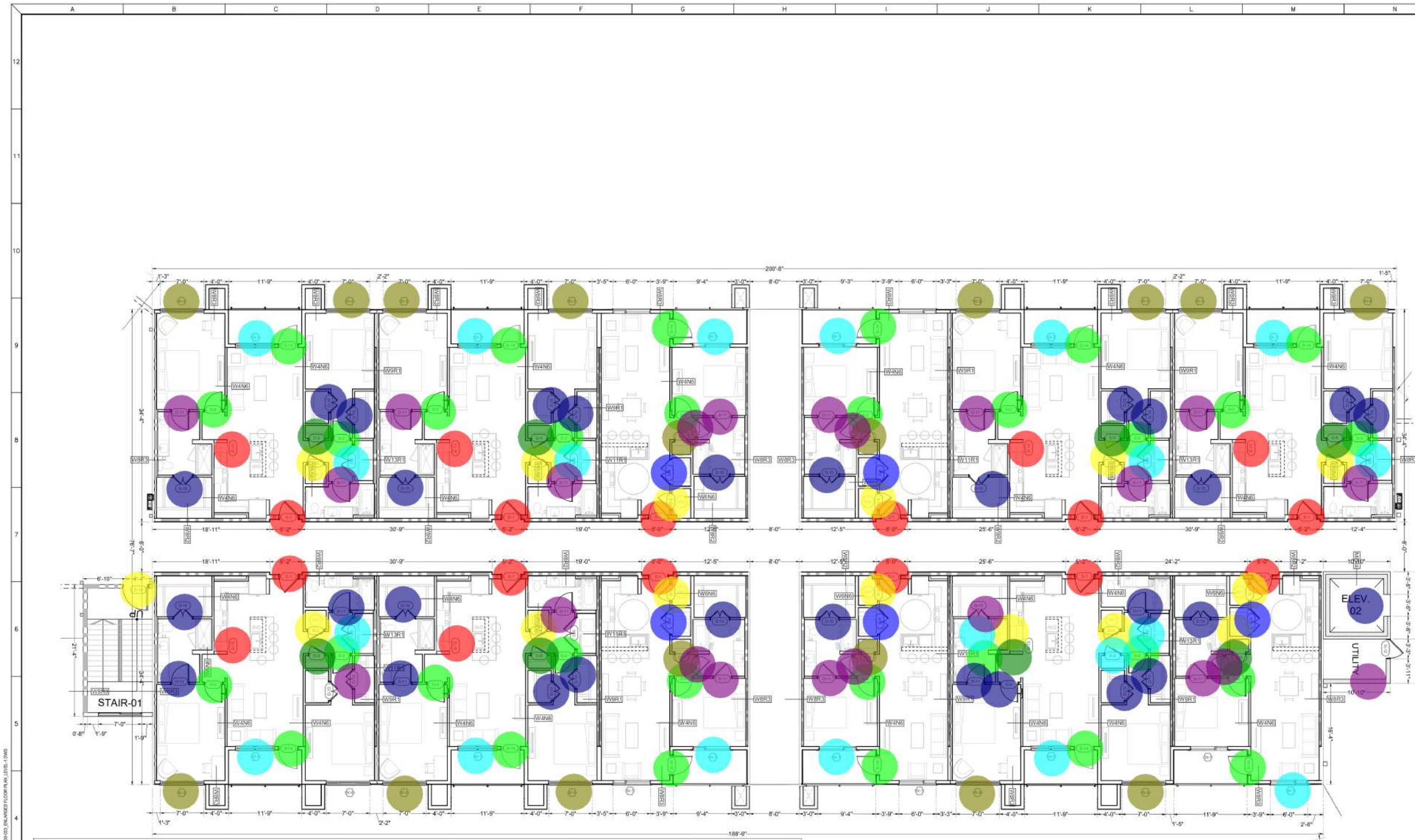
- 



MOBILITY  
TRANSPARENCY  
SUSTAINABILITY

**MTS ENGINEERING & DESIGN**  
9950 WESTPARK DR. SUITE #426  
HOUSTON TEXAS 77063  
(281) 404-4438 (281) 253-4849  
**TBPE NO. 18844 , TBAE NO. 3853**





- "W4" (6'-0"x7'-10") Insulated Glazed Window 13.0 EA
- "W1" (6'-0"x6'-0") Insulated Glazed Window 12.0 EA
- "D11" (2'-10"x6'-8") SC Wood Door & Frame With Paint & Hardware 22.0 EA
- "D10" (3'-0"x6'-8") SC Wood Door & Frame With Paint & Hardware 30.0 EA
- "D13" (1'-6"x6'-8") SC Wood Door & Frame With Paint & Hardware 6.0 EA
- "D2" (2'-10"x6'-8") SC Wood Door & Frame With Paint & Hardware 19.0 EA
- "D14" (3'-0"x8'-0") Aluminium Door With Paint & Hardware 12.0 EA
- "D8" (2'-6"x6'-8") SC Wood Door & Frame With Paint & Hardware 8.0 EA
- "D6" (5'-0"x6'-8") SC Wood Door & Frame With Paint & Hardware 8.0 EA
- "D1" (3'-0"x8'-0") SC Wood Door & Frame With Paint & Hardware 12.0 EA
- "D3" (2'-8"x6'-8") SC Wood Door & Frame With Paint & Hardware 14.0 EA
- "D4" (4'-0"x6'-8") SC Wood Door & Frame With Paint & Hardware 5.0 EA
- "D9" (2'-0"x6'-8") SC Wood Door & Frame With Paint & Hardware 4.0 EA
- "D15" (4'-0"x8'-0") Hollow Metal Door With Paint & Hardware 1.0 EA

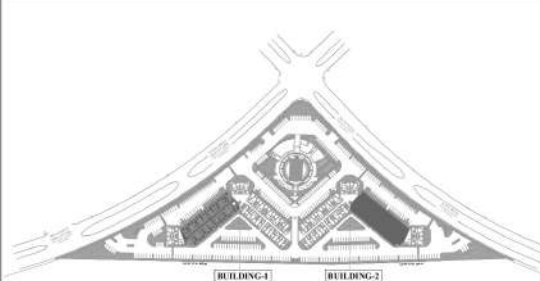
NG-1 & 2)

- GENERAL NOTES:**
1. REFER TO SHEET A042 TO A046 FOR ENLARGED UNIT PLANS, DOOR AND WINDOW TYPES AND LOCATION, BALCONY DIMENSIONS, RESIDENTIAL UNIT RCP'S, ETC.
  2. REFER TO SHEET A 013 FOR WALL ASSEMBLY TYPES AND ADDITIONAL INFORMATION.
  3. REFER TO SHEET A 084 FOR DOOR SCHEDULE, AND SHEET A087 FOR WINDOW SCHEDULE
  4. ALL SLOPES TO BE 1/4" / FT UNLESS NOTED OTHERWISE.
  5. REFER TO INTERIOR DRAWINGS FOR CORRIDOR LIGHTING AND FINISH SPECIFICATIONS.
  6. REFER TO BUILDING AND WALL SECTIONS FINISHES.
  7. REFER TO ELECTRICAL BUILDING PLANS FOR EMERGENCY AND EXIT LIGHT LOCATIONS.
  8. DOOR LOCATIONS NOT DIMENSIONED SHALL BE LOCATED AT MIDPOINT OF WALL OR 4" CLEAR OF ROOM FROM ADJACENT WALL CORNER TO HINGE SIDE, TYPICAL.
  9. DOORS AND WINDOWS AT UNITS PROVIDE VENTILATION FOR AT LEAST 4% OF THE FLOOR AREA.
  10. ALL BALCONIES AND DECKS SHALL HAVE SPRINKLER PROTECTION.
  11. REFER TO LANDSCAPE DRAWINGS FOR GROUND FLOOR YARD FENCING.

- LEGEND**
- CMU WALL
  - 2 HOUR FIRE RATED WALL
  - HARRIS COUNTY ENGINEERING DEPARTMENT - PERMITS OFFICE  
REVIEWED FOR CODE COMPLIANCE  
Reviewer: S. Vaughn  
All code deficiencies found in the field shall be corrected and made compliant prior to the Certificate Of Compliance being issued.  
04/12/2024 2:07:55 PM
  - WALL PARTITION
  - DOOR TYPE
  - WINDOW TYPE
  - SECTION MARK
  - FEC FIRE EXTINGUISHER CABINET
  - FDC FIRE DEPARTMENT CONNECTION
  - FHR FIRE HOSE REEL CABINET.



**KEY PLAN:**



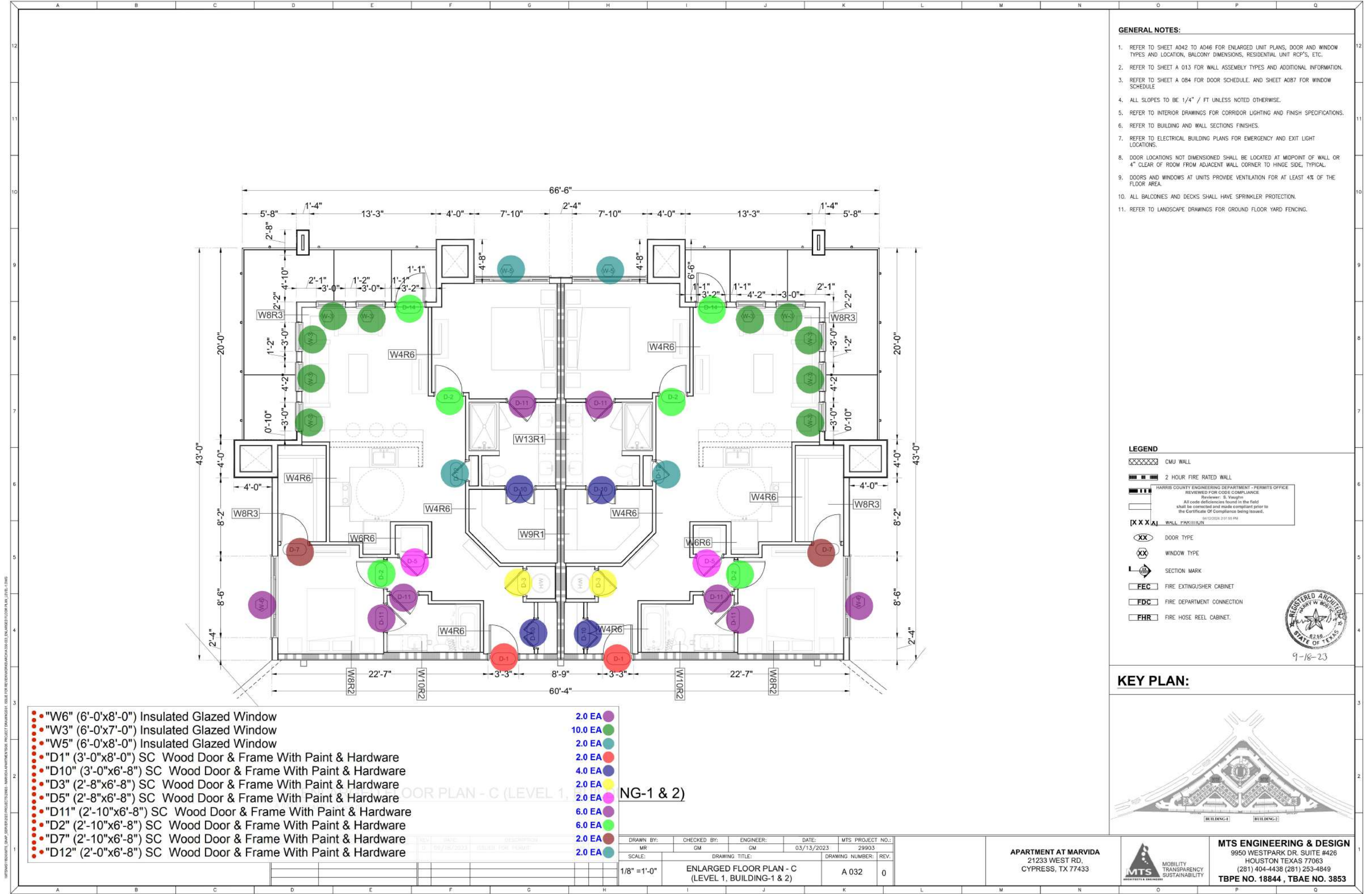
DRAWN BY: MR	CHECKED BY: GM	ENGINEER: GM	DATE: 03/13/2023	MTS PROJECT NO.: 29903
SCALE: 1/8" = 1'-0"	DRAWING TITLE: ENLARGED FLOOR PLAN - B (LEVEL 1, BUILDING-1 & 2)		DRAWING NUMBER: A 031	REV: 0

**APARTMENT AT MARVIDA**  
21233 WEST RD.,  
CYPRESS, TX 77433





**MTS ENGINEERING & DESIGN**  
9950 WESTPARK DR. SUITE #426  
HOUSTON TEXAS 77063  
(281) 404-4438 (281) 253-4849  
**TBPE NO. 18844 , TBAE NO. 3853**







 <p><b>MTS</b> ARCHITECTS &amp; ENGINEERS</p> <p>MOBILITY TRANSPARENCY SUSTAINABILITY</p>	<p><b>MTS ENGINEERING &amp; DESIGN</b></p> <p>9950 WESTPARK DR. SUITE #426 HOUSTON TEXAS 77063 (281) 404-4438 (281) 253-4849</p> <p><b>TBPE NO. 18844 , TBAE NO. 3853</b></p>
--	---

 <p><b>MTS</b> ARCHITECTS &amp; ENGINEERS</p> <p>MOBILITY TRANSPARENCY SUSTAINABILITY</p>	<p><b>MTS ENGINEERING &amp; DESIGN</b></p> <p>9950 WESTPARK DR. SUITE #426 HOUSTON TEXAS 77063 (281) 404-4438 (281) 253-4849</p> <p><b>TBPE NO. 18844 , TBAE NO. 3853</b></p>
--	---



UNIT DATA

**KEYED NOTES:**

- [1] FAIR HOUSING ACT 36" WIDE ACCESSIBLE ROUTE.
- [2] WALL TILE: SEE FINISH SCHEDULE ON INTERIOR DESIGN DRAWINGS.
- [3] BASEBOARD: PAINTED 1x4 (3/4" x 3-1/2") D4S FINGER-JOINTED PINE BASE.
- [4] BEDROOM/COAT CLOSET SHELVING: 1 ROD, 1 SHELF.
- [5] BEDROOM CLOSET SHELVING: 2 ROD, 2 SHELF.
- [6] LINEN SHELVING: STANDARD UNITS.
- [7] PANTRY AND LANDRY SHELVING: STANDARD UNITS.
- [8] ELECTRIC/GAS RANGE.
- [9] REFRIGERATOR.
- [10] DISHWASHER.
- [11] OVER THE RANGE MICROWAVE WITH DUCTED EXHAUST.
- [12] STACKED CLOTHES WASHER AND DRYER.
- [13] ADA COMPLIANT SIDE-BY-SIDE WASHER AND DRYER.
- [14] ADA COMPLIANT DROP-IN ELECTRIC RANGE. MOUNT IN CABINET AT 34" AFF.
- [15] ADA COMPLIANT REFRIGERATOR, DISHWASHER AND FREESTANDING MICROWAVE OVEN WITH BUILT-IN TRIM KIT.
- [16] DUCTED RANGE HOOD WITH ADA COMPLIANT WALL MOUNTED CONTROLS WITHIN 48" REACH RANGE HEIGHT.
- [17] KITCHEN BASE CABINET: 24" DEEP. FIX UPPER PANEL (NO DRAWER) AT SINK CABINET.
- [18] REMOVABLE BASE CABINET: FULL HEIGHT DOORS WITH INTEGRATED TOE KICK AT SINK WITH ANSI 2009 SECTION 1003.12.4. TO COMPLY
- [19] REMOVABLE BASE CABINET: FULL HEIGHT DOORS WITH INTEGRATED TOE KICK AT KITCHEN WORK SURFACE TO COMPLY WITH ANSI 2009 SECTION 113.12.
- [20] MOVEABLE ISLAND (BY OWNER).
- [21] WALL-MOUNTED GRANITE DESK TOP WITH LOW-PROFILE SUPPORT STANCHIONS.
- [22] LUXURY VINYL (LVT WOOD PLANK) THROUGHOUT ENTIRE ROOM. SEE INTERIOR DRAWINGS FOR SPEC.
- [23] BATHROOM TILE. SEE INTERIOR DRAWINGS FOR SPEC.
- [24] KITCHEN SINK: STAINLESS STEEL UNDERMOUNT SINK, SEE PLUMBING DRAWINGS.
- [25] ADA COMPLIANT TOILET, TUB AND SHOWER.
- [26] ELECTRICAL PANEL: SEE ELECTRICAL DRAWINGS.
- [27] THANKLESS WATER HEATER : SEE PLUMBING DRAWINGS.

### GENERAL NOTES

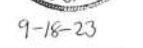
- 1 ALL RESIDENTIAL HARD SURFACE FLOORING SHALL BE INSTALLED WITH SOUND CONTROL UNDERLAYMENT.  
2 REFER TO SECTION 09 6005F FOR ADDITIONAL INFORMATION.
- 3 THE MINIMUM FLOOR/CEILING ASSEMBLY SOUND TRANSMISSION RATING BETWEEN APARTMENTS SHALL BE STC  
4 50 (TESTED PER ASTM E90-2004) AND IIC 50 (TESTED PER ASTM E492-2004)). SEE CTION 09 6005 FOR  
5 ADDITIONAL INFORMATION.
- 6 THE MINIMUM DEMISING PARTITION WALL SOUND TRANSMISSION RATING BETWEEN APARTMENTS SHALL BE STC 50  
7 (TESTED PER ASTM E90-2004). SEE CTION 09 6005 FOR ADDITIONAL INFORMATION.
- 8 COMPLETED APARTMENT SHALL BE DELIVERED WITH THE FOLLOWING:
- 9 KITCHEN CABINETS.
- 10 KITCHEN AND LAUNDRY APPLIANCES.
- 11 WINDOW BLINDS: SEE SECTION 12 2113.
- 12 ALL UNIT WALLS ARE WB4 UNLESS NOTED OTHERWISE.
- 13 CEILING PLAN: SEE A9 SERIES DRAWINGS FOR RCP LEGEND AND NOTES.
- 14 ALL DIMENSIONS ARE FROM FACE OF STUD TO FACE OF STUD, UNLESS NOTED OTHERWISE.

### LEGEND

- ☐ ENAMEL PAINTED SMOOTH GYPSUM BOARD
- ☐ DOWN LIGHT
- ☐ CEILING FAN
- ☐ WALL MOUNT LIGHT
- ☐ AC SUPPLY GRILLES
- ☐ EXIT LIGHT WITH BATTERY BACKUP
- ☐ EMERGENCY LIGHT WITH BATTERY BACKUP
- ☐ VINYL WOOD PLANK (LVT) W/ SOUND MAT
- ☐ CARPET
- ☐ TILE

FLOORING LEGEND NOTES:

1. REFER TO INTERIOR DESIGN DRAWINGS FOR FLOOR FINISH SCHEDULE.
2. PROVIDE TRANSITION STRIPS AT ALL CHANGES IN FLOORING MATERIAL.  
CENTER TRANSITION STRIPS IN DOORWAYS, U.N.O.

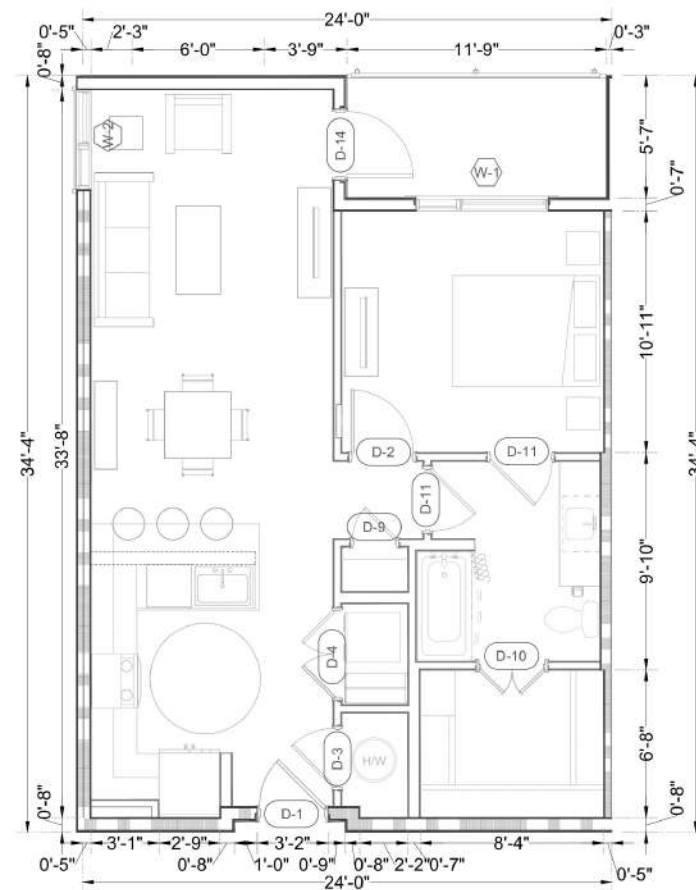


**APARTMENT AT MARVIDA**  
21233 WEST RD,  
CYPRESS, TX 77433



**MTS ENGINEERING & DESIGN**  
9950 WESTPARK DR. SUITE #426  
HOUSTON TEXAS 77063  
(281) 404-4438 (281) 253-4849  
**TBPE NO. 18844 . TBAE NO. 3853**





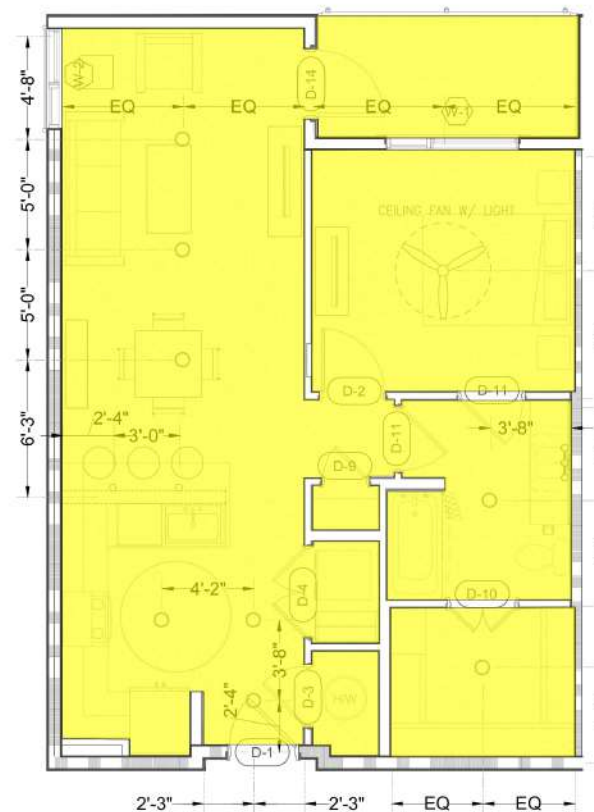
UNIT ID	FLOOR AREA	BEDROOMS	BATHS	TOTAL UNIT	NOTES
A2B	820 Sq.Ft.	1	1	4	

**KEYED NOTES:**

- [1] FAIR HOUSING ACT 36" WIDE ACCESSIBLE ROUTE.
- [2] WALL TILE: SEE FINISH SCHEDULE ON INTERIOR DESIGN DRAWINGS.
- [3] BASEBOARD: PAINTED 1x4 (3/4" x 3-1/2") D4S FINGER-JOINTED PINE BASE.
- [4] BEDROOM/COAT CLOSET SHELVING: 1 ROD, 1 SHELF.
- [5] BEDROOM CLOSET SHELVING: 2 ROD, 2 SHELF.
- [6] LINEN SHELVING: STANDARD UNITS.
- [7] PANTRY AND LANDRY SHELVING: STANDARD UNITS.
- [8] ELECTRIC/GAS RANGE.
- [9] REFRIGERATOR.
- [10] DISHWASHER.
- [11] OVER THE RANGE MICROWAVE WITH DUCTED EXHAUST.
- [12] STACKED CLOTHES WASHER AND DRYER.
- [13] ADA COMPLIANT SIDE-BY-SIDE WASHER AND DRYER.
- [14] ADA COMPLIANT DROP-IN ELECTRIC RANGE. MOUNT IN CABINET AT 34" AFF.
- [15] ADA COMPLIANT REFRIGERATOR, DISHWASHER AND FREESTANDING MICROWAVE OVEN WITH BUILT-IN TRIM KIT.
- [16] DUCTED RANGE HOOD WITH ADA COMPLIANT WALL MOUNTED CONTROLS WITHIN 48" REACH RANGE HEIGHT.
- [17] KITCHEN BASE CABINET: 24" DEEP. FIX UPPER PANEL (NO DRAWER) AT SINK CABINET.
- [18] REMOVABLE BASE CABINET: FULL HEIGHT DOORS WITH INTEGRATED TOE KICK AT SINK WITH ANSI 2009 SECTION 1003.12.4. TO COMPLY
- [19] REMOVABLE BASE CABINET: FULL HEIGHT DOORS WITH INTEGRATED TOE KICK AT KITCHEN WORK SURFACE TO COMPLY WITH ANSI 2009 SECTION 113.12.
- [20] MOVEABLE ISLAND (BY OWNER).
- [21] WALL-MOUNTED GRANITE DESK TOP WITH LOW-PROFILE SUPPORT STANCHIONS.
- [22] LUXURY VINYL (LVT WOOD PLANK) THROUGHOUT ENTIRE ROOM. SEE INTERIOR DRAWINGS FOR SPEC.
- [23] BATHROOM TILE. SEE INTERIOR DRAWINGS FOR SPEC.
- [24] KITCHEN SINK: STAINLESS STEEL UNDERMOUNT SINK, SEE PLUMBING DRAWINGS.
- [25] ADA COMPLIANT TOILET, TUB AND SHOWER.
- [26] ELECTRICAL PANEL: SEE ELECTRICAL DRAWINGS.
- [27] THANKLESS WATER HEATER : SEE PLUMBING DRAWINGS.

### GENERAL NOTES

- 1 ALL RESIDENTIAL HARD SURFACE FLOORING SHALL BE INSTALLED WITH SOUND CONTROL UNDERLAYMENT.  
2 REFER TO SECTION 09 6005F FOR ADDITIONAL INFORMATION.
- 3 THE MINIMUM FLOOR/CEILING ASSEMBLY SOUND TRANSMISSION RATING BETWEEN APARTMENTS SHALL BE STC  
4 50 (TESTED PER ASTM E90-2004) AND IIC 50 (TESTED PER ASTM E492-2004)). SEE CTION 09 6005 FOR  
5 ADDITIONAL INFORMATION.
- 6 THE MINIMUM DEMISING PARTITION WALL SOUND TRANSMISSION RATING BETWEEN APARTMENTS SHALL BE STC 50  
7 (TESTED PER ASTM E90-2004). SEE CTION 09 6005 FOR ADDITIONAL INFORMATION.
- 8 COMPLETED APARTMENT SHALL BE DELIVERED WITH THE FOLLOWING:
- 9 KITCHEN CABINETS.
- 10 KITCHEN AND LAUNDRY APPLIANCES.
- 11 WINDOW BLINDS: SEE SECTION 12 2113.
- 12 ALL UNIT WALLS ARE WB4 UNLESS NOTED OTHERWISE.
- 13 CEILING PLAN: SEE A9 SERIES DRAWINGS FOR RCP LEGEND AND NOTES.
- 14 ALL DIMENSIONS ARE FROM FACE OF STUD TO FACE OF STUD, UNLESS NOTED OTHERWISE.



### LEGEND

- ☐ ENAMEL PAINTED SMOOTH GYPSUM BOARD
- ☐ DOWN LIGHT
- ☐ CEILING FAN
- ☐ WALL MOUNT LIGHT
- ☐ AC SUPPLY GRILLES
- ☐ EXIT LIGHT WITH BATTERY BACKUP
- ☐ EMERGENCY LIGHT WITH BATTERY BACKUP
- ☐ VINYL WOOD PLANK (LVT) W/ SOUND MAT
- ☐ CARPET
- ☐ TILE

FLOORING LEGEND NOTES:

1. REFER TO INTERIOR DESIGN DRAWINGS FOR FLOOR FINISH SCHEDULE.
2. PROVIDE TRANSITION STRIPS AT ALL CHANGES IN FLOORING MATERIAL.  
CENTER TRANSITION STRIPS IN DOORWAYS. U.N.O.

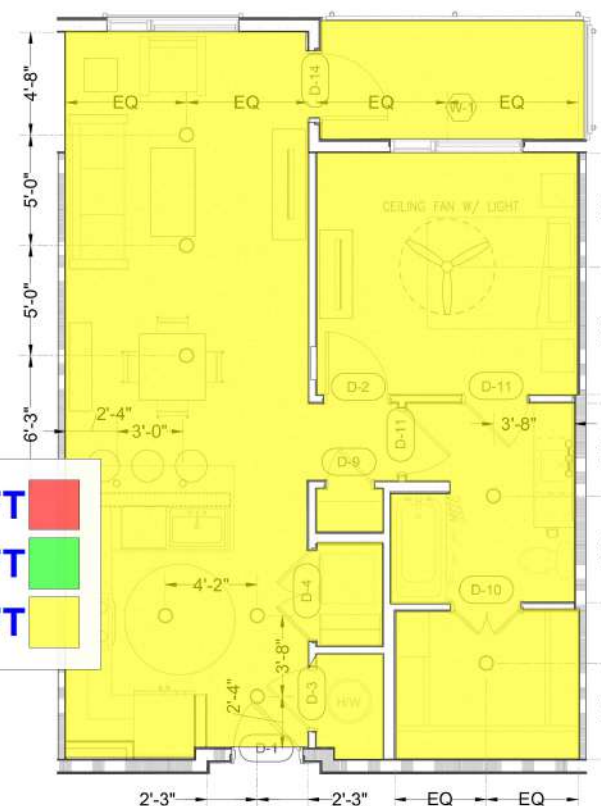
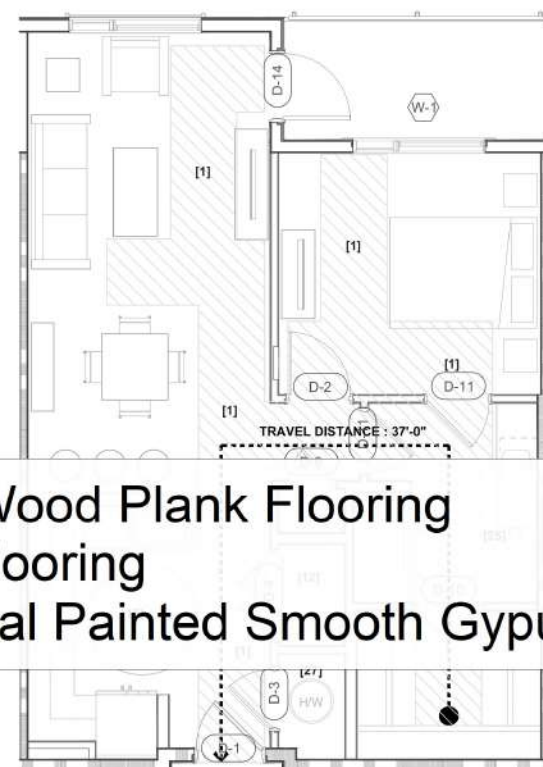
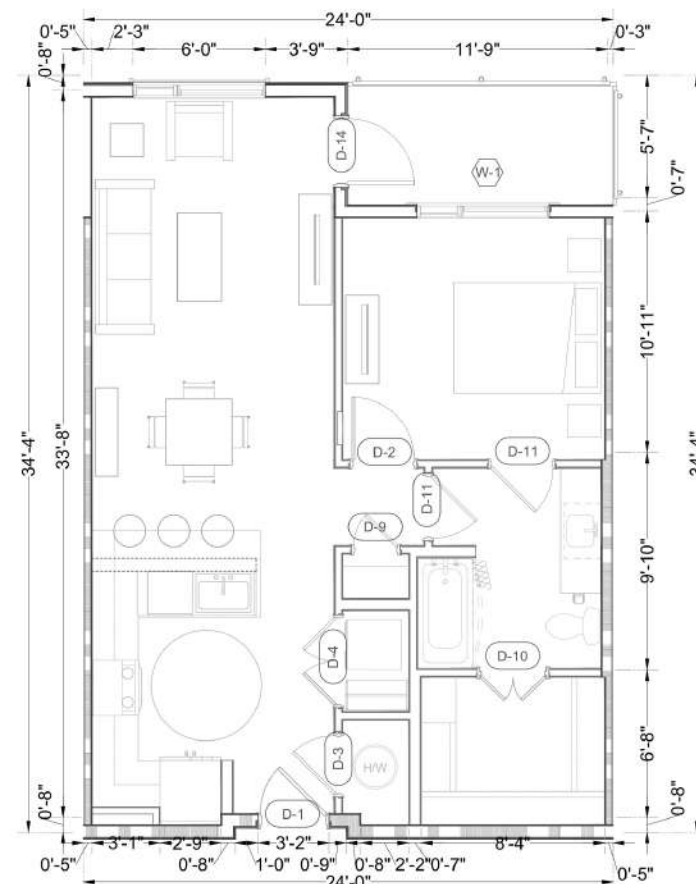
[illegible]

**APARTMENT AT MARVIDA**  
21233 WEST RD,  
CYPRESS, TX 77433



**MTS ENGINEERING & DESIGN**  
9950 WESTPARK DR. SUITE #426  
HOUSTON TEXAS 77063  
(281) 404-4438 (281) 253-4849  
**TBPE NO. 18844 . TBAE NO. 3853**



UNIT DATA

UNIT ID	FLOOR AREA	BEDROOMS	BATHS	TOTAL UNIT	NOTES
A2C	820 Sq.Ft.	1	1	4	

**KEYED NOTES:**

- [1] FAIR HOUSING ACT 36" WIDE ACCESSIBLE ROUTE.
- [2] WALL TILE: SEE FINISH SCHEDULE ON INTERIOR DESIGN DRAWINGS.
- [3] BASEBOARD: PAINTED 1x4 (3/4" x 3-1/2") D4S FINGER-JOINTED PINE BASE.
- [4] BEDROOM/COAT CLOSET SHELVING: 1 ROD, 1 SHELF.
- [5] BEDROOM CLOSET SHELVING: 2 ROD, 2 SHELF.
- [6] LINEN SHELVING: STANDARD UNITS.
- [7] PANTRY AND LANDRY SHELVING: STANDARD UNITS.
- [8] ELECTRIC/GAS RANGE.
- [9] REFRIGERATOR.
- [10] DISHWASHER.
- [11] OVER THE RANGE MICROWAVE WITH DUCTED EXHAUST.
- [12] STACKED CLOTHES WASHER AND DRYER.
- [13] ADA COMPLIANT SIDE-BY-SIDE WASHER AND DRYER.
- [14] ADA COMPLIANT DROP-IN ELECTRIC RANGE. MOUNT IN CABINET AT 34" AFF.
- [15] ADA COMPLIANT REFRIGERATOR, DISHWASHER AND FREESTANDING MICROWAVE OVEN WITH BUILT-IN TRIM KIT.
- [16] DUCTED RANGE HOOD WITH ADA COMPLIANT WALL MOUNTED CONTROLS WITHIN 48" REACH RANGE HEIGHT.
- [17] KITCHEN BASE CABINET: 24" DEEP. FIX UPPER PANEL (NO DRAWER) AT SINK CABINET.
- [18] REMOVABLE BASE CABINET: FULL HEIGHT DOORS WITH INTEGRATED TOE KICK AT SINK WITH ANSI 2009 SECTION 1003.12.4. TO COMPLY
- [19] REMOVABLE BASE CABINET: FULL HEIGHT DOORS WITH INTEGRATED TOE KICK AT KITCHEN WORK SURFACE TO COMPLY WITH ANSI 2009 SECTION 113.12.
- [20] MOVEABLE ISLAND (BY OWNER).
- [21] WALL-MOUNTED GRANITE DESK TOP WITH LOW-PROFILE SUPPORT STANCHIONS.
- [22] LUXURY VINYL (LVT WOOD PLANK) THROUGHOUT ENTIRE ROOM. SEE INTERIOR DRAWINGS FOR SPEC.
- [23] BATHROOM TILE. SEE INTERIOR DRAWINGS FOR SPEC.
- [24] KITCHEN SINK: STAINLESS STEEL UNDERMOUNT SINK, SEE PLUMBING DRAWINGS.
- [25] ADA COMPLIANT TOILET, TUB AND SHOWER.
- [26] ELECTRICAL PANEL: SEE ELECTRICAL DRAWINGS.
- [27] THANKLESS WATER HEATER : SEE PLUMBING DRAWINGS.

### GENERAL NOTES

- 1 ALL RESIDENTIAL HARD SURFACE FLOORING SHALL BE INSTALLED WITH SOUND C CONTROL UNDERLAYMENT.  
REFER TO SECTION 09 6005F FOR ADDITIONAL INFORMATION.
- 2 THE MINIMUM FLOOR/CEILING ASSEMBLY SOUND TRANSMISSION RATING BETWEEN APARTMENTS SHALL BE STC  
50 (TESTED PER ASTM E90-2004) AND IIC 50 (TESTED PER ASTM E492-2004)). SEE CTION 09 6005 FOR  
ADDITIONAL INFORMATION.
- 3 THE MINIMUM DEMISING PARTITION WALLS SHALL BE STC 50  
(TESTED PER ASTM E90-2004).
- 4 COMPLETED APARTMENT SHALL BE STC 50  
KITCHEN CABINETS. ADDITIONAL INFORMATION.
- 5 KITCHEN AND LAUNDRY APPLIANCES.
- 6 WINDOW BLINDS: SEE SECTION 12 2113.
- 7 ALL UNIT WALLS ARE WB4 UNLESS NOTED OTHERWISE.
- 8 CEILING PLAN: SEE A9 SERIES DRAWINGS FOR RCP LEGEND AND NOTES.
- 9 ALL DIMENSIONS ARE FROM FACE OF STUD TO FACE OF STUD, UNLESS NOTED OTHERWISE.
- 10

### LEGEND

- ☐ ENAMEL PAINTED SMOOTH GYPSUM BOARD
- ☐ DOWN LIGHT
- ☐ CEILING FAN
- ☐ WALL MOUNT LIGHT
- ☐ AC SUPPLY GRILLES
- ☐ EXIT LIGHT WITH BATTERY BACKUP
- ☐ EMERGENCY LIGHT WITH BATTERY BACKUP
- ☐ VINYL WOOD PLANK (LVT) W/ SOUND MAT
- ☐ CARPET
- ☐ TILE

FLOORING LEGEND NOTES:

1. REFER TO INTERIOR DESIGN DRAWINGS FOR FLOOR FINISH SCHEDULE.
2. PROVIDE TRANSITION STRIPS AT ALL CHANGES IN FLOORING MATERIAL.  
CENTER TRANSITION STRIPS IN DOORWAYS. U.N.O.

## LVT Wood Plank Flooring

 Tile Flooring

 Enamel Painted Smooth Gypsum Ceiling Bo... 742.5 SQ FT

**596.1 SQ FT**

**72.6 SQ FT**

742.5 SQ FT

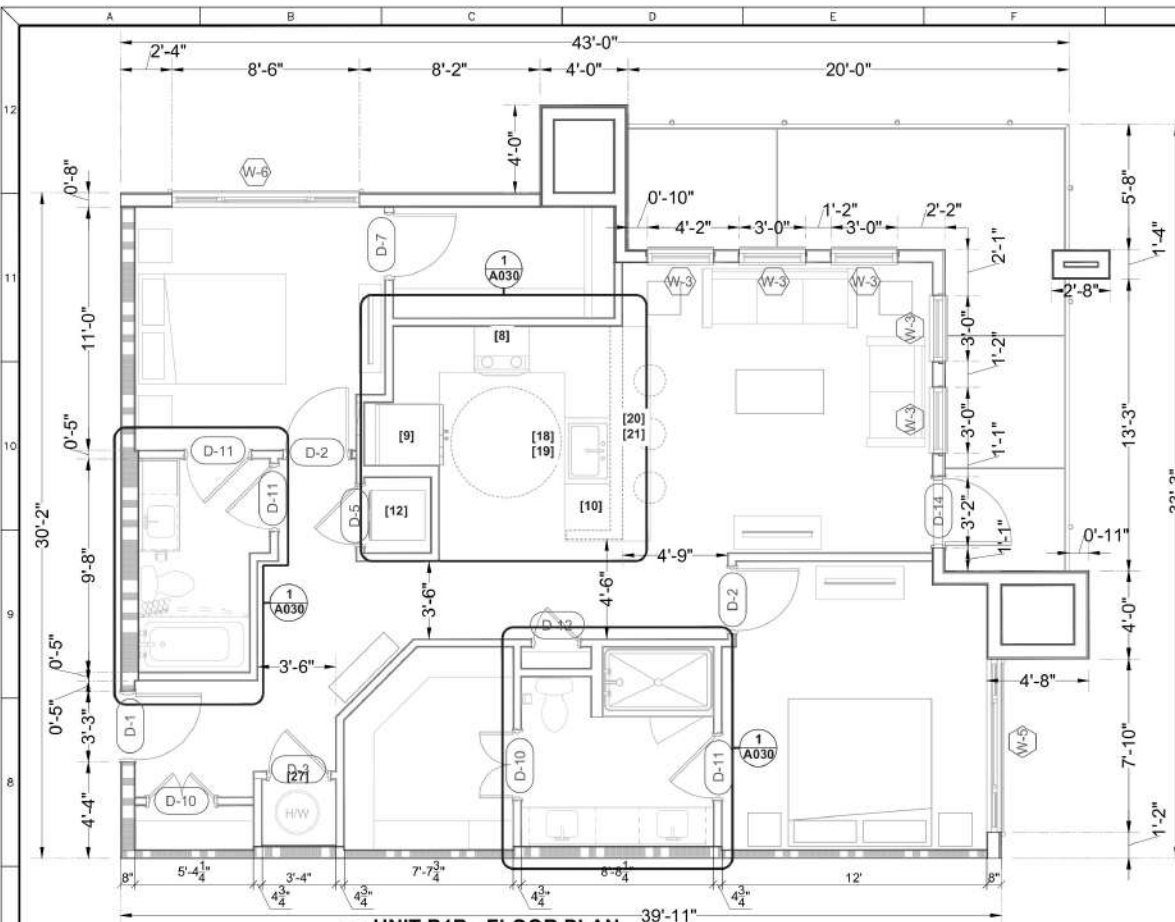
DWG #	REFERENCE DRAWINGS	REV	DATE:	DESCRIPTION	BY:	CHK	APR	DRAWN BY:	CHECKED BY:	ENGINEER:	DATE:	MTS PROJECT N
		0	09/18/2023	ISSUED FOR PERMIT	MR	GM	GM	MR	GM	GM	03/13/2023	29903
								SCALE:	DRAWING TITLE:			DRAWING NUMBER:
								1/4"=1'-0"	UNIT PLAN A2C			A 044

**APARTMENT AT MARVIDA**  
21233 WEST RD,  
CYPRESS, TX 77433



**MTS ENGINEERING & DESIGN**  
9950 WESTPARK DR. SUITE #426  
HOUSTON TEXAS 77063  
(281) 404-4438 (281) 253-4849  
**TBPE NO. 18844 . TBAE NO. 3853**

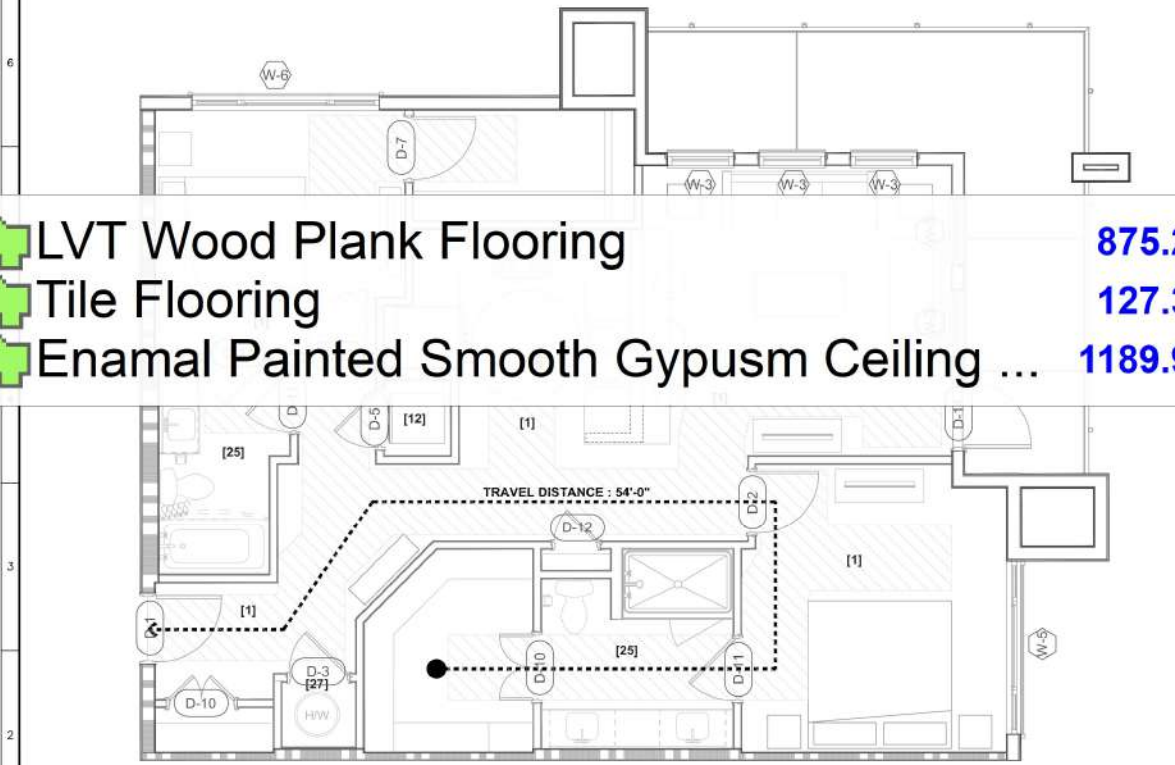




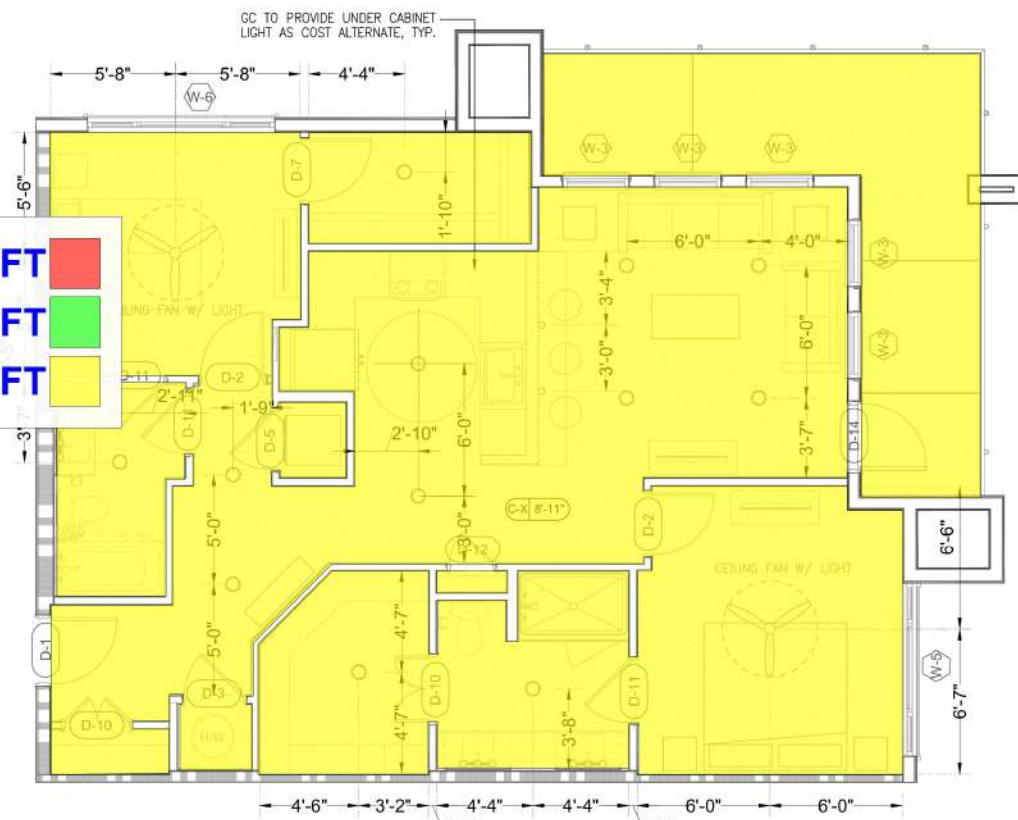
1 UNIT B1B - FLOOR PLAN  
SCALE: 1/4" = 1'-0"






2 UNIT B1B - FLOOR FINISH PLAN  
SCALE: 1/4" = 1'-0"



3 UNIT B1B - ACCESSIBLE ROUTE PLAN / FAIR HOUSING ACT (FHA) PLAN  
SCALE: 1/4" = 1'-0"



4 UNIT B1B - REFLECTED CEILING PLAN  
SCALE: 1/4" = 1'-0"

 LVT Wood Plank Flooring  
 Tile Flooring  
 Enamel Painted Smooth Gypsum Ceiling ...  
875.2 SQ FT  
127.3 SQ FT  
1189.9 SQ FT

UNIT DATA

UNIT ID	FLOOR AREA	BEDROOMS	BATHS	TOTAL UNIT	NOTES
B1B	1318 Sq.Ft.	2	2	16	

KEYED NOTES:

- FAIR HOUSING ACT 36" WIDE ACCESSIBLE ROUTE.
- WALL TILE: SEE FINISH SCHEDULE ON INTERIOR DESIGN DRAWINGS.
- BASEBOARD: PAINTED 1x4 (3/4" x 3-1/2") D4S FINGER-JOINTED PINE BASE.
- BEDROOM/COAT CLOSET SHELVE: 1 ROD, 1 SHELF.
- BEDROOM CLOSET SHELVE: 2 ROD, 2 SHELF.
- LINEN SHELVE: STANDARD UNITS.
- PANTRY AND LANDRY SHELVE: STANDARD UNITS.
- ELECTRIC/GAS RANGE.
- REFRIGERATOR.
- DISHWASHER.
- OVER THE RANGE MICROWAVE WITH DUCTED EXHAUST.
- STACKED CLOTHES WASHER AND DRYER.
- ADA COMPLIANT SIDE-BY-SIDE WASHER AND DRYER.
- ADA COMPLIANT DROP-IN ELECTRIC RANGE. MOUNT IN CABINET AT 34" AFF.
- ADA COMPLIANT REFRIGERATOR, DISHWASHER AND FREESTANDING MICROWAVE OVEN WITH BUILT-IN TRIM KIT.
- DUCTED RANGE HOOD WITH ADA COMPLIANT WALL MOUNTED CONTROLS WITHIN 48" REACH RANGE HEIGHT.
- KITCHEN BASE CABINET: 24" DEEP. FIX UPPER PANEL (NO DRAWER) AT SINK CABINET.
- REMOVABLE BASE CABINET: FULL HEIGHT DOORS WITH INTEGRATED TOE KICK AT SINK WITH ANSI 2009 SECTION 1003.12.4. TO COMPLY.
- REMOVABLE BASE CABINET: FULL HEIGHT DOORS WITH INTEGRATED TOE KICK AT KITCHEN WORK SURFACE TO COMPLY WITH ANSI 2009 SECTION 113.12.
- MOVEABLE ISLAND (BY OWNER).
- WALL-MOUNTED GRANITE DESK TOP WITH LOW-PROFILE SUPPORT STANCHIONS.
- LUXURY VINYL (LVT WOOD PLANK) THROUGHOUT ENTIRE ROOM. SEE INTERIOR DRAWINGS FOR SPEC.
- BATHROOM TILE. SEE INTERIOR DRAWINGS FOR SPEC.
- KITCHEN SINK: STAINLESS STEEL UNDERMOUNT SINK, SEE PLUMBING DRAWINGS.
- ADA COMPLIANT TOILET, TUB AND SHOWER.
- ELECTRICAL PANEL: SEE ELECTRICAL DRAWINGS.
- THANKLESS WATER HEATER: SEE PLUMBING DRAWINGS.

GENERAL NOTES

- ALL RESIDENTIAL HARD SURFACE FLOORING SHALL BE INSTALLED WITH SOUND C CONTROL UNDERLAYMENT. REFER TO SECTION 09 6005 FOR ADDITIONAL INFORMATION.
- THE MINIMUM FLOOR/CEILING ASSEMBLY SOUND TRANSMISSION RATING BETWEEN APARTMENTS SHALL BE STC 50 (TESTED PER ASTM E90-2004) AND IIC 50 (TESTED PER ASTM E492-2004). SEE CITATION 09 6005 FOR ADDITIONAL INFORMATION.
- THE MINIMUM DEMISING PARTITION WALL SHALL BE STC 50 (TESTED PER ASTM E90-2004) AND IIC 50 (TESTED PER ASTM E492-2004). SEE CITATION 09 6005 FOR ADDITIONAL INFORMATION.
- COMPLETED APARTMENT SHALL BE DELIVERED TO THE OWNER WITH ALL NECESSARY PERMITS AND INSPECTIONS. ALL CODE DEFICIENCIES FOUND IN THE FIELD SHALL BE CORRECTED AND MADE COMPLIANT PRIOR TO THE CERTIFICATE OF COMPLETION BEING ISSUED.
- KITCHEN CABINETS.
- KITCHEN AND LAUNDRY APPLIANCES.
- WINDOW BLINDS: SEE SECTION 12 2113.
- ALL UNIT WALLS ARE WB4 UNLESS NOTED OTHERWISE.
- CEILING PLAN: SEE A9 SERIES DRAWINGS FOR RCP LEGEND AND NOTES.
- ALL DIMENSIONS ARE FROM FACE OF STUD TO FACE OF STUD, UNLESS NOTED OTHERWISE.

LEGEND

- ENAMEL PAINTED SMOOTH GYPSUM BOARD
- DOWN LIGHT
- CEILING FAN
- WALL MOUNT LIGHT
- AC SUPPLY GRILLES
- EXIT LIGHT WITH BATTERY BACKUP
- EMERGENCY LIGHT WITH BATTERY BACKUP
- VINYL WOOD PLANK (LVT) W/ SOUND MAT
- CARPET
- TILE

FLOORING LEGEND NOTES:

- REFER TO INTERIOR DESIGN DRAWINGS FOR FLOOR FINISH SCHEDULE.
- PROVIDE TRANSITION STRIPS AT ALL CHANGES IN FLOORING MATERIAL. CENTER TRANSITION STRIPS IN DOORWAYS, U.N.O.



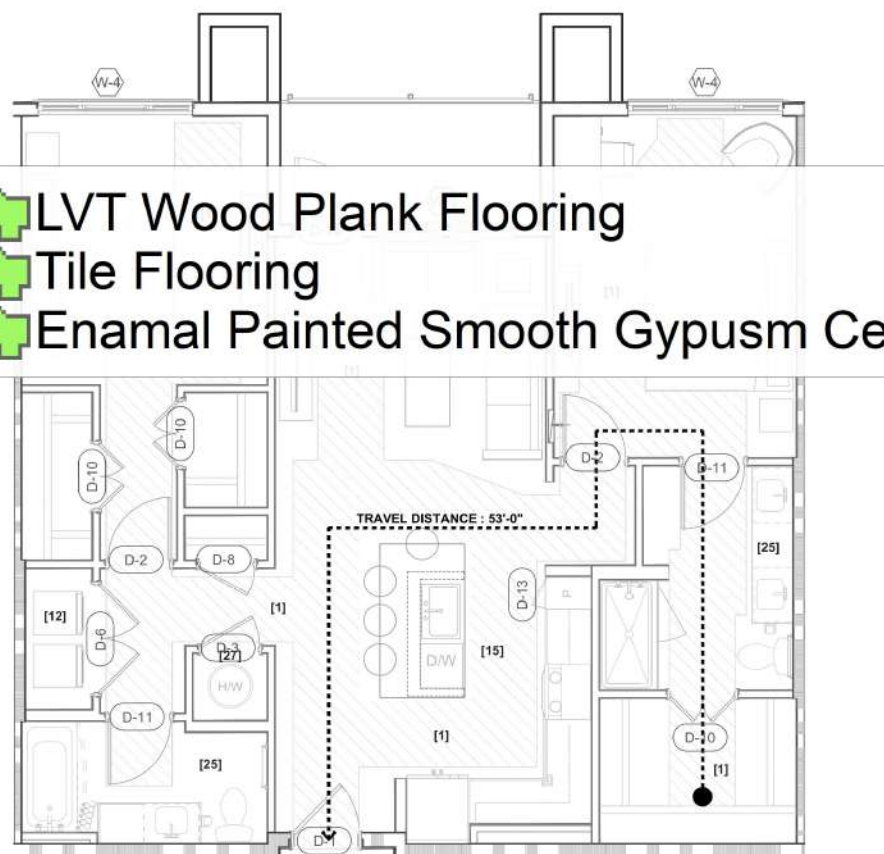
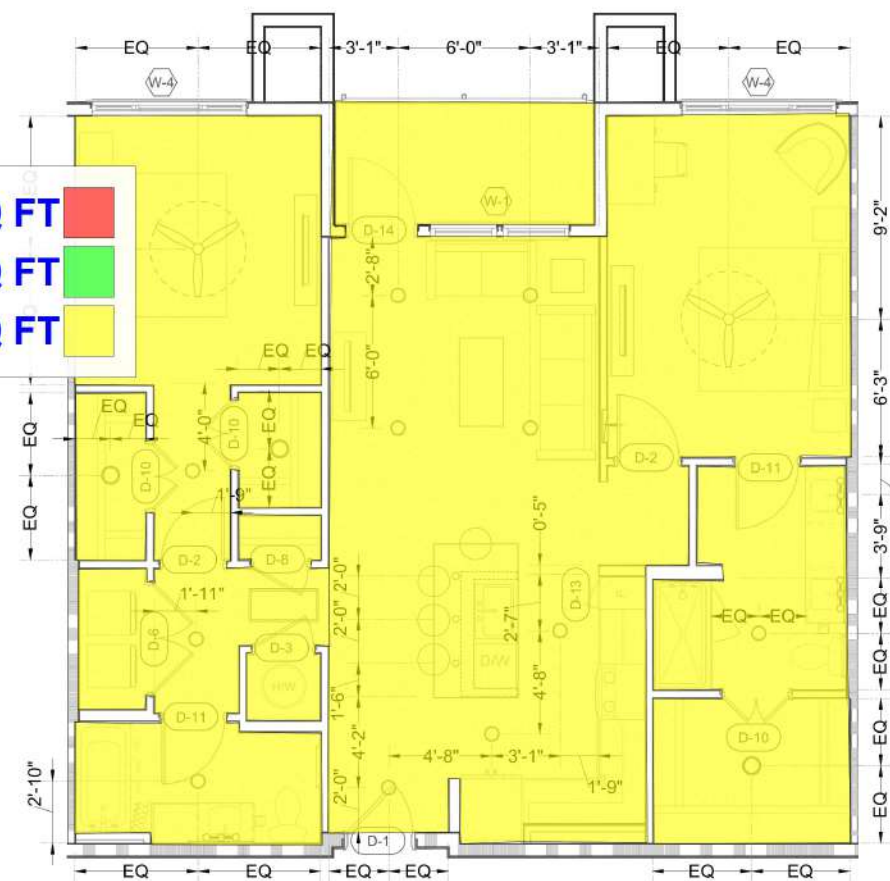
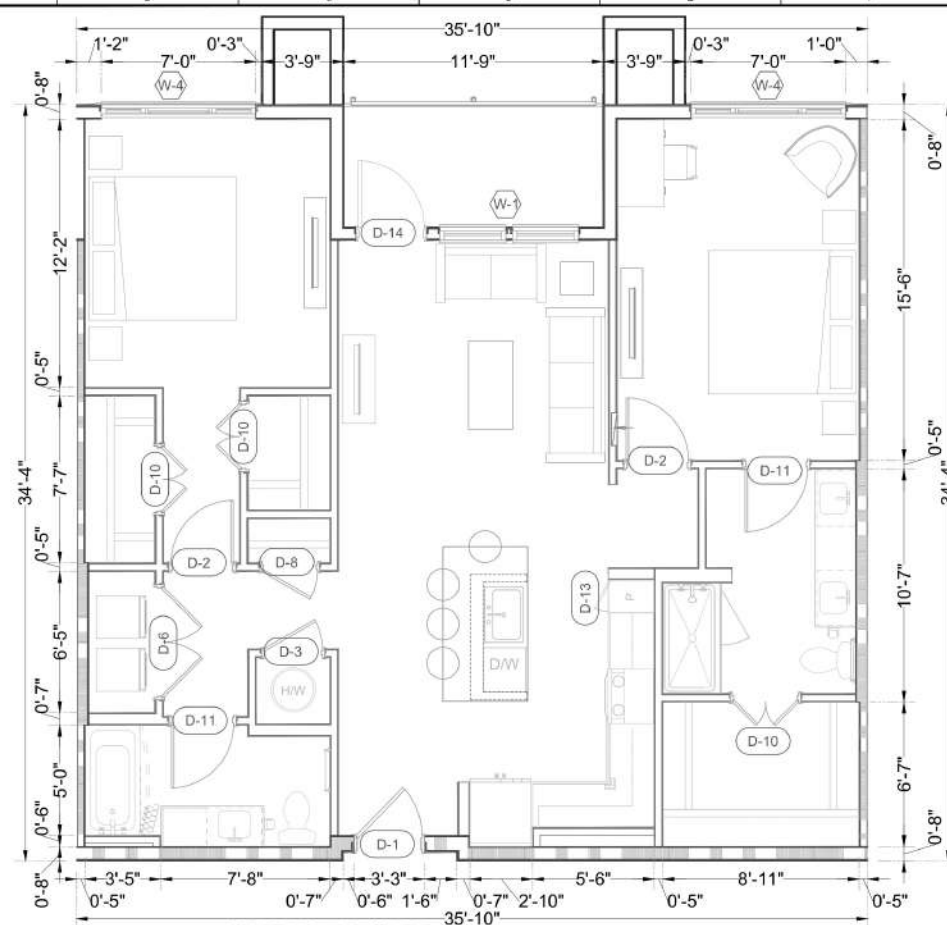
DWG #	REFERENCE DRAWINGS	REV	DATE	DESCRIPTION	BY	CHK	APR	DRAWN BY	CHECKED BY	ENGINEER	DATE	MTS PROJECT NO.
		0	09/18/2023	ISSUED FOR PERMIT	MR	GM	GM	MR	GM	GM	03/13/2023	29903
								SCALE:		DRAWING TITLE:		DRAWING NUMBER: REV.
								1/4"=1'-0"		UNIT PLAN B1B		A 045 0

APARTMENT AT MARVIDA  
21233 WEST RD,  
CYPRESS, TX 77433



**MTS ENGINEERING & DESIGN**  
9950 WESTPARK DR. SUITE #426  
HOUSTON TEXAS 77063  
(281) 404-4438 (281) 253-4849  
**TBPE NO. 18844 , TBAE NO. 3853**



UNIT DATA

UNIT ID	FLOOR AREA	BEDROOMS	BATHS	TOTAL UNIT	NOTES
B1C	1228 Sq.Ft.	2	2	48	

**KEYED NOTES:**

- [1] FAIR HOUSING ACT 36" WIDE ACCESSIBLE ROUTE.
- [2] WALL TILE: SEE FINISH SCHEDULE ON INTERIOR DESIGN DRAWINGS.
- [3] BASEBOARD: PAINTED 1x4 (3/4" x 3-1/2") D4S FINGER-JOINTED PINE BASE.
- [4] BEDROOM/COAT CLOSET SHELVING: 1 ROD, 1 SHELF.
- [5] BEDROOM CLOSET SHELVING: 2 ROD, 2 SHELF.
- [6] LINEN SHELVING: STANDARD UNITS.
- [7] PANTRY AND LANDRY SHELVING: STANDARD UNITS.
- [8] ELECTRIC/GAS RANGE.
- [9] REFRIGERATOR.
- [10] DISHWASHER.
- [11] OVER THE RANGE MICROWAVE WITH DUCTED EXHAUST.
- [12] STACKED CLOTHES WASHER AND DRYER.
- [13] ADA COMPLIANT SIDE-BY-SIDE WASHER AND DRYER.
- [14] ADA COMPLIANT DROP-IN ELECTRIC RANGE. MOUNT IN CABINET AT 34" AFF.
- [15] ADA COMPLIANT REFRIGERATOR, DISHWASHER AND FREESTANDING MICROWAVE OVEN WITH BUILT-IN TRIM KIT.
- [16] DUCTED RANGE HOOD WITH ADA COMPLIANT WALL MOUNTED CONTROLS WITHIN 48" REACH RANGE HEIGHT.
- [17] KITCHEN BASE CABINET: 24" DEEP. FIX UPPER PANEL (NO DRAWER) AT SINK CABINET.
- [18] REMOVABLE BASE CABINET: FULL HEIGHT DOORS WITH INTEGRATED TOE KICK AT SINK WITH ANSI 2009 SECTION 1003.12.4. TO COMPLY
- [19] REMOVABLE BASE CABINET: FULL HEIGHT DOORS WITH INTEGRATED TOE KICK AT KITCHEN WORK SURFACE TO COMPLY WITH ANSI 2009 SECTION 113.12.
- [20] MOVEABLE ISLAND (BY OWNER).
- [21] WALL-MOUNTED GRANITE DESK TOP WITH LOW-PROFILE SUPPORT STANCHIONS.
- [22] LUXURY VINYL (LVT WOOD PLANK) THROUGHOUT ENTIRE ROOM. SEE INTERIOR DRAWINGS FOR SPEC.
- [23] BATHROOM TILE. SEE INTERIOR DRAWINGS FOR SPEC.
- [24] KITCHEN SINK: STAINLESS STEEL UNDERMOUNT SINK, SEE PLUMBING DRAWINGS.
- [25] ADA COMPLIANT TOILET, TUB AND SHOWER.
- [26] ELECTRICAL PANEL: SEE ELECTRICAL DRAWINGS.
- [27] THANKLESS WATER HEATER : SEE PLUMBING DRAWINGS.

### GENERAL NOTES

- 1 ALL RESIDENTIAL HARD SURFACE FLOORING SHALL BE INSTALLED WITH SOUND & CONTROL UNDERLAYMENT.  
REFER TO SECTION 09 6005F FOR ADDITIONAL INFORMATION.
- 2 THE MINIMUM FLOOR/CEILING ASSEMBLY SOUND TRANSMISSION RATING BETWEEN APARTMENTS SHALL BE STC  
50 (TESTED PER ASTM E90-2004) AND IIC 50 (TESTED PER ASTM E492-2004); SEE CITATION 09 6005 FOR  
ADDITIONAL INFORMATION.
- 3 THE MINIMUM DEMISING PARTITION SHALL BE STC 50  
(TESTED PER ASTM E90-2004).  
4 COMPLETED APARTMENT SHALL BE STC 50  
5 KITCHEN CABINETS.  
6 KITCHEN AND LAUNDRY APPLIANCES.  
7 WINDOW BLINDS: SEE SECTION 12 2113.  
8 ALL UNIT WALLS ARE WB4 UNLESS NOTED OTHERWISE.  
9 CEILING PLAN: SEE A9 SERIES DRAWINGS FOR RCP LEGEND AND NOTES.  
10 ALL DIMENSIONS ARE FROM FACE OF STUD TO FACE OF STUD, UNLESS NOTED OTHERWISE.
- HARRIS COUNTY ENGINEERING DEPARTMENT - PERMITS OFFICE  
REVIEWED FOR CODE COMPLIANCE  
Reviewer: S. Vaughn  
All code deficiencies found in the field  
shall be corrected and made compliant prior to  
the Certificate of Compliance being issued.  
04/10/2024 2:07:57 PM

### LEGEND

- ☐ ENAMEL PAINTED SMOOTH GYPSUM BOARD
- ☐ DOWN LIGHT
- ☐ CEILING FAN
- ☐ WALL MOUNT LIGHT
- ☐ AC SUPPLY GRILLES
- ☐ EXIT LIGHT WITH BATTERY BACKUP
- ☐ EMERGENCY LIGHT WITH BATTERY BACKUP
- ☐ VINYL WOOD PLANK (LVT) W/ SOUND MAT
- ☐ CARPET
- ☐ TILE

FLOORING LEGEND NOTES:

1. REFER TO INTERIOR DESIGN DRAWINGS FOR FLOOR FINISH SCHEDULE.
2. PROVIDE TRANSITION STRIPS AT ALL CHANGES IN FLOORING MATERIAL.  
CENTER TRANSITION STRIPS IN DOORWAYS. U.N.O.

DWG #		REFERENCE DRAWINGS		REV	DATE:	DESCRIPTION	BY:	CHK	APR	DRAWN BY:		CHECKED BY:	ENGINEER:	DATE:	MTS PROJECT N
				0	09/18/2023	ISSUED FOR PERMIT	MR	GM	GM		MR	GM	GM	03/13/2023	29903
										SCALE:	DRAWING TITLE:			DRAWING NUMBER:	RE
										1/4"=1'-0"	UNIT PLAN B1C			A 046	0

**APARTMENT AT MARVIDA**  
21233 WEST RD,  
CYPRESS, TX 77433

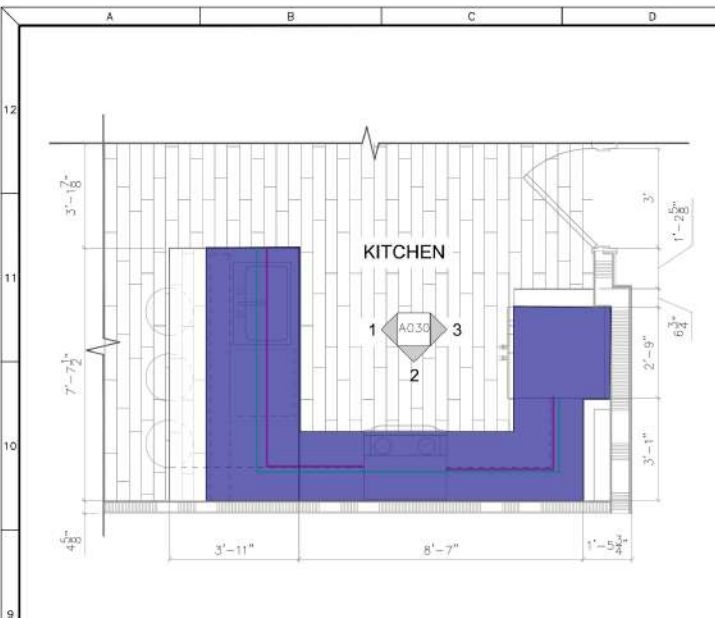


**MTS ENGINEERING & DESIGN**  
9950 WESTPARK DR. SUITE #426  
HOUSTON TEXAS 77063  
(281) 404-4438 (281) 253-4849  
**TBPE NO. 18844 . TBAE NO. 3853**

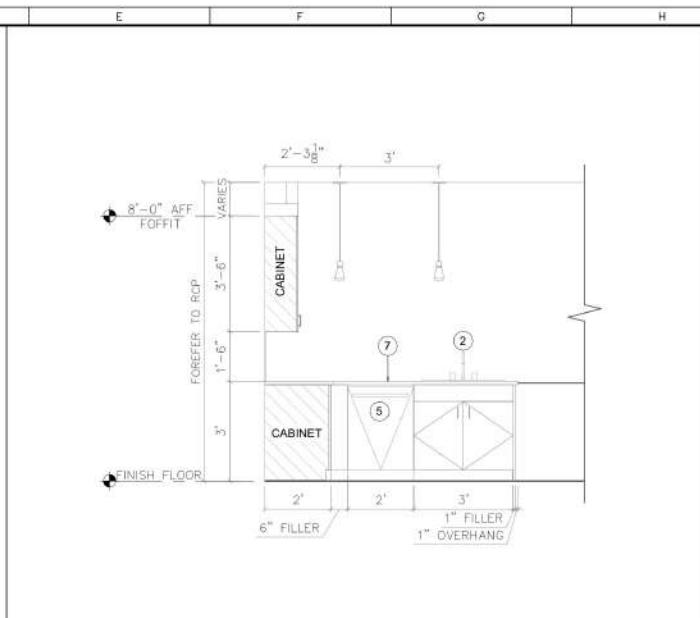


9-18-23

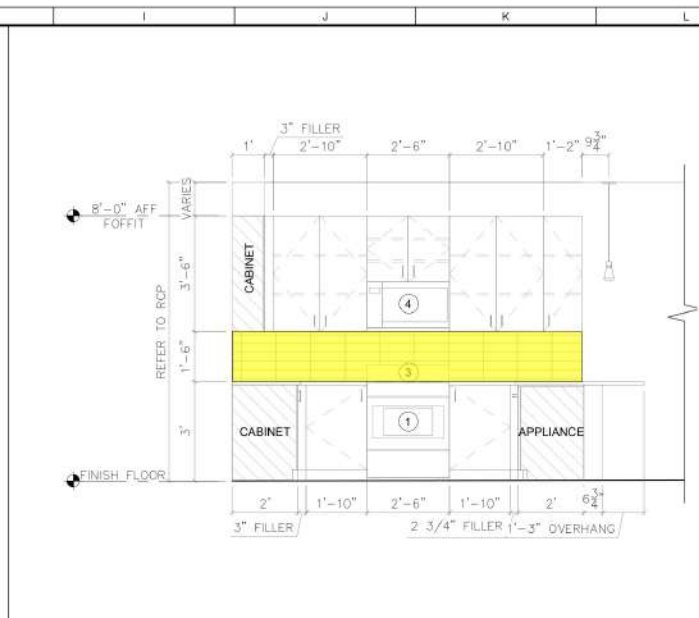




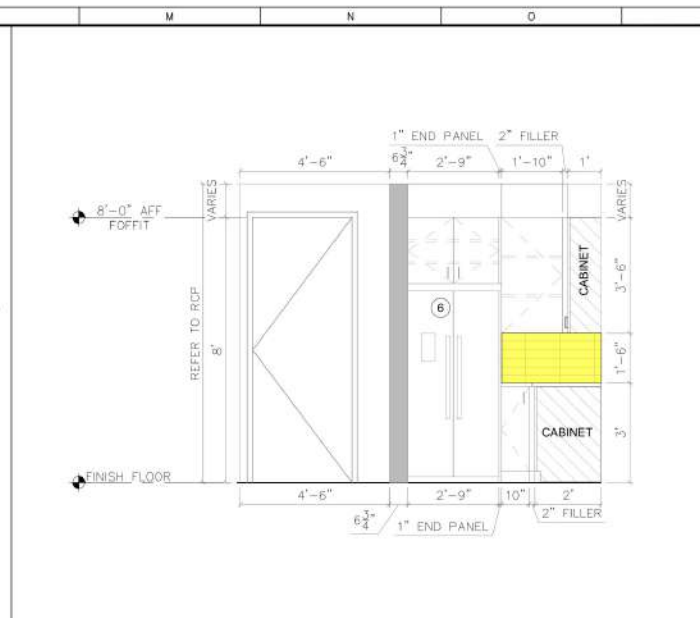
1 KITCHEN FLOOR PLAN - UNIT TYPE A2A SCALE: 3/8" = 1'-0"



2 KITCHEN ELEVATION - 01 (UNIT TYPE A2A) SCALE: 3/8" = 1'-0"



3 KITCHEN ELEVATION - 02 (UNIT TYPE A2A) SCALE: 3/8" = 1'-0"

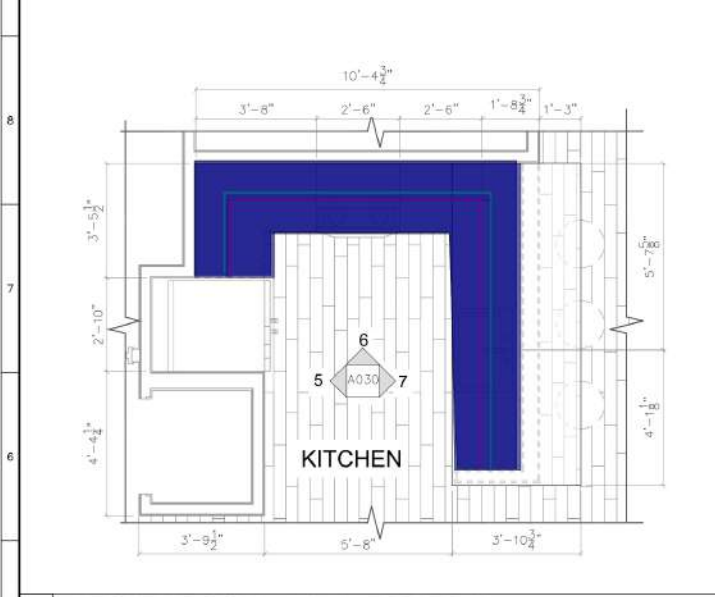


4 KITCHEN ELEVATION - 03 (UNIT TYPE A2A) SCALE: 3/8" = 1'-0"

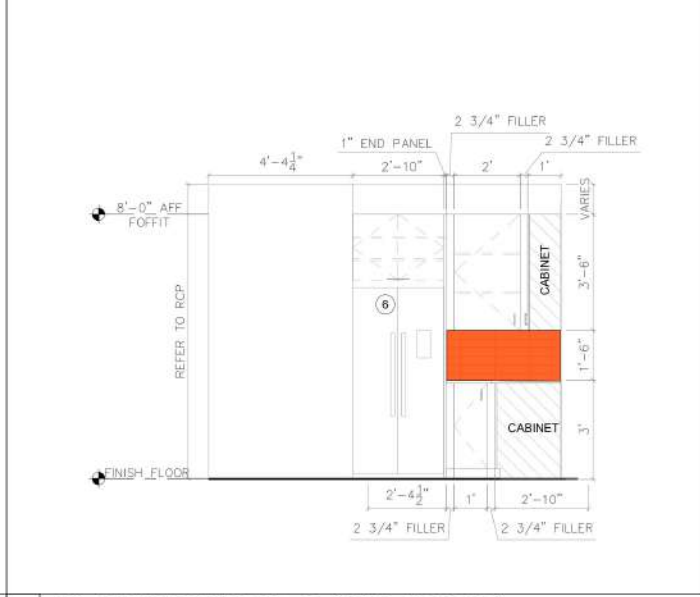
**LOCATION NOTE:-**  
CONTRACTOR SHALL TAKE SPECIAL CARE IN THE LAYOUT OF HIS/HER WORK & IN VERIFICATION OF ANY EXISTING CONDITIONS & DIMENSIONS. THE COORDINATION & ALIGNMENT OF THE WORK WITH ITSELF & ADJACENT WORKS IS OF PRIMARY IMPORTANCE & SHOULD TAKE PRECEDENCE OVER WRITTEN DIMENSIONS, ESPECIALLY APPROXIMATE DIMENSIONS. THE INSTALLATION CONTRACTOR SHALL LAYOUT HIS WORKS & VERIFY TO INSURE ALIGNMENT & FIT. HE WILL REPORT ANY DISCREPANCIES TO THE PROJECT SUPERINTENDENT AND ARCHITECT.

1. DEVICES INSTALLED BY SEPARATE TRADES INSTALLED IN THE SAME LOCATION, SHALL BE MOUNTED IN A CONFIGURATION ACCEPTABLE TO THE ARCHITECT.

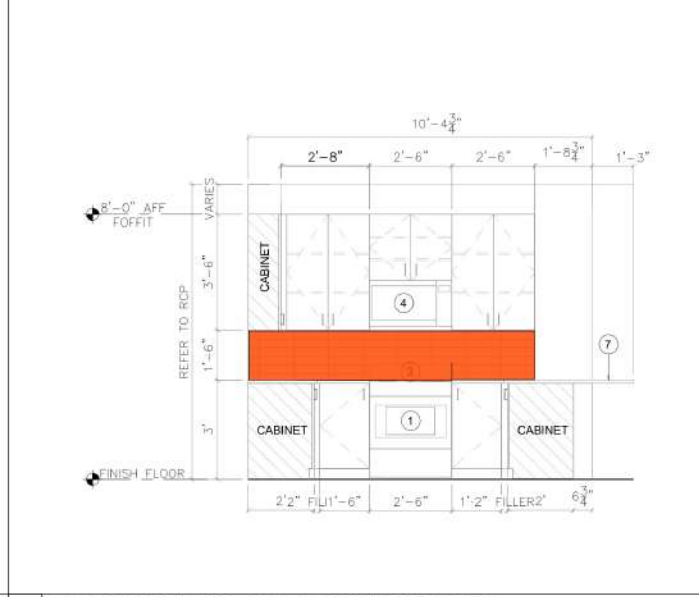
2. WHEN IN DOUBT, CHECK WITH ARCHITECT / ENGINEER PRIOR TO ROUGH-IN. ALL COSTS TO CORRECT DEVIATIONS FROM THESE PRINCIPLES WILL BE THE RESPONSIBILITY OF THE INSTALLING CONTRACTOR.



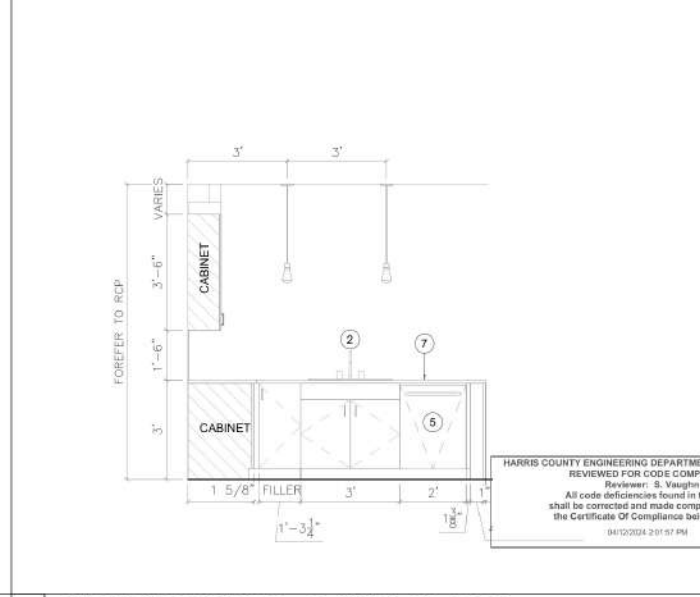
4 KITCHEN FLOOR PLAN - UNIT TYPE B1B SCALE: 3/8" = 1'-0"



5 KITCHEN ELEVATION - 01 (UNIT TYPE B1B) SCALE: 3/8" = 1'-0"



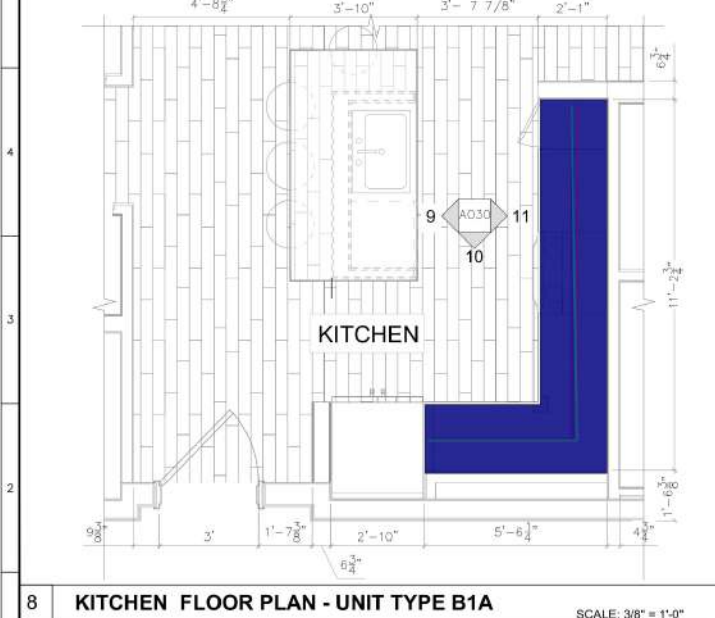
6 KITCHEN ELEVATION - 02 (UNIT TYPE B1B) SCALE: 3/8" = 1'-0"



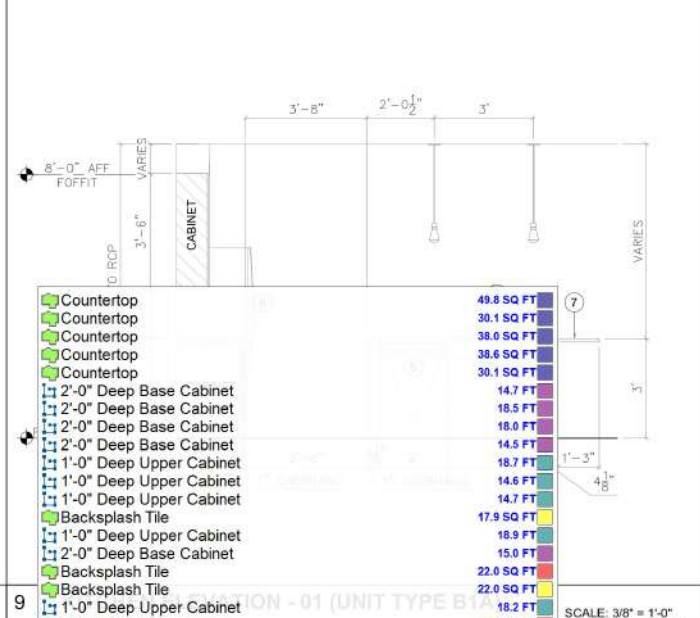
7 KITCHEN ELEVATION - 03 (UNIT TYPE B1B) SCALE: 3/8" = 1'-0"

**NOTE :-**  
1. OVEN  
2. SINK W/ GARBAGE DISPOSAL  
3. RANGE  
4. MICROWAVE W/ BUILT-IN HOOD  
5. ISLAND  
6. CABINET LIGHT FIXTURE

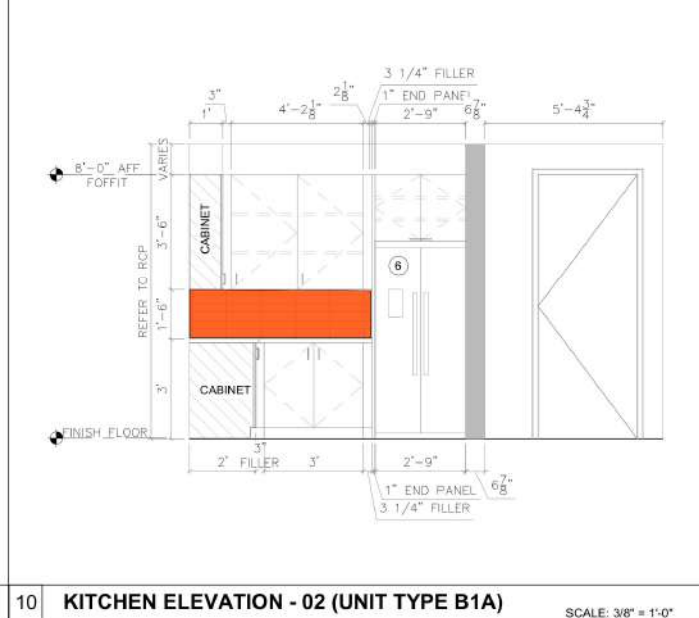
HARRIS COUNTY ENGINEERING DEPARTMENT - PERMITS OFFICE  
REVIEWER: S. VAUGHN  
All code deficiencies found in the field shall be corrected and made compliant prior to the Certificate Of Compliance being issued.  
(04/12/2024 2:07:57 PM)



8 KITCHEN FLOOR PLAN - UNIT TYPE B1A SCALE: 3/8" = 1'-0"



9 KITCHEN ELEVATION - 01 (UNIT TYPE B1A) SCALE: 3/8" = 1'-0"



10 KITCHEN ELEVATION - 02 (UNIT TYPE B1A) SCALE: 3/8" = 1'-0"

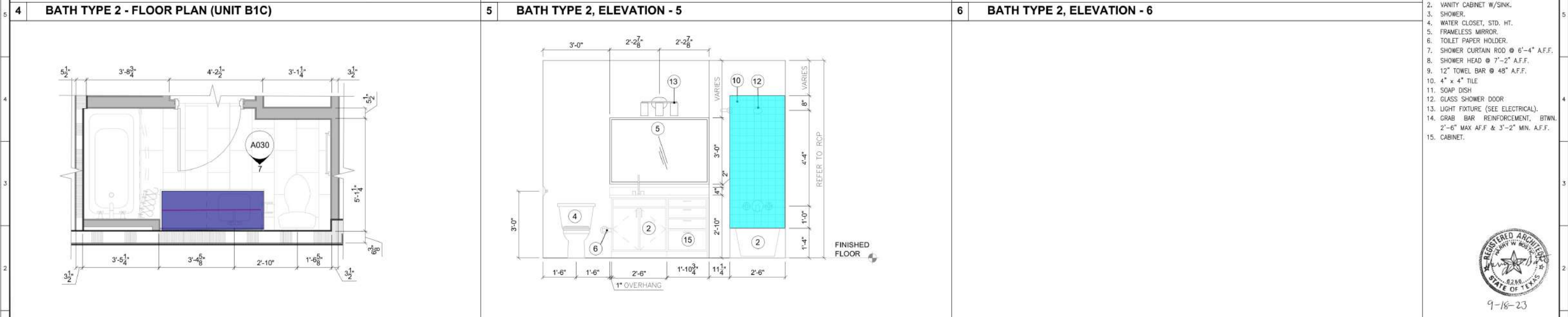
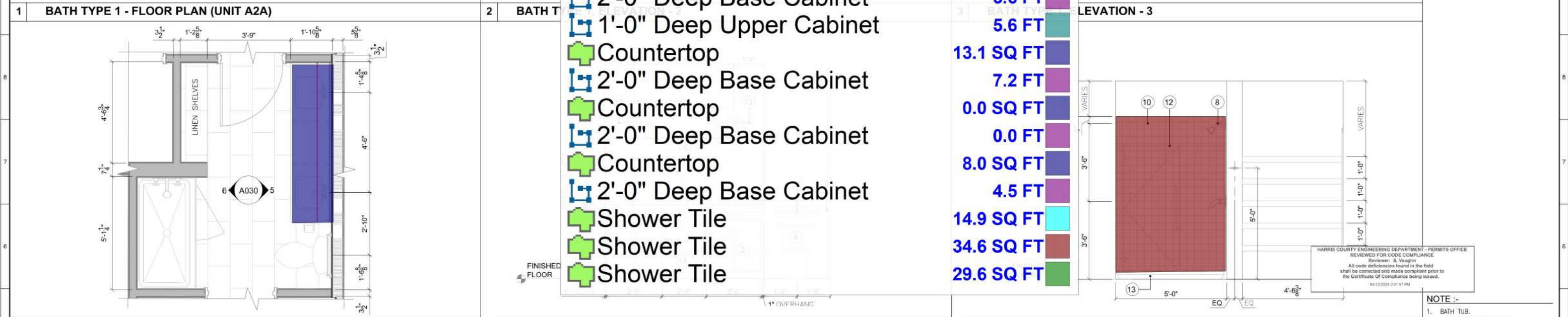
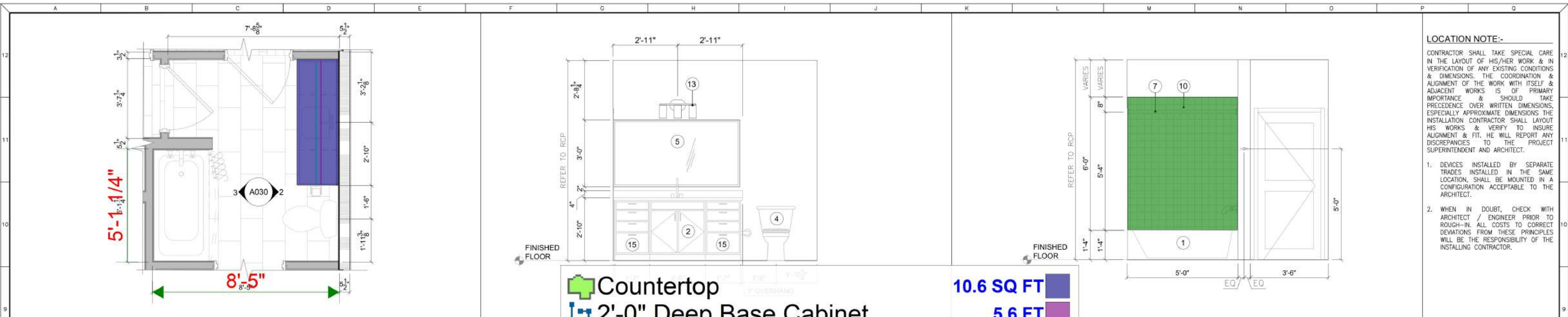


11 KITCHEN ELEVATION - 03 (UNIT TYPE B1A) SCALE: 3/8" = 1'-0"

Countertop	49.8 SQ FT
Countertop	30.1 SQ FT
Countertop	38.0 SQ FT
Countertop	38.6 SQ FT
Countertop	30.1 SQ FT
2'-0" Deep Base Cabinet	14.7 FT
2'-0" Deep Base Cabinet	18.5 FT
2'-0" Deep Base Cabinet	18.0 FT
2'-0" Deep Base Cabinet	14.5 FT
1'-0" Deep Upper Cabinet	18.7 FT
1'-0" Deep Upper Cabinet	14.6 FT
1'-0" Deep Upper Cabinet	14.7 FT
Backsplash Tile	17.9 SQ FT
1'-0" Deep Upper Cabinet	18.9 FT
2'-0" Deep Base Cabinet	15.0 FT
Backsplash Tile	22.0 SQ FT
Backsplash Tile	22.0 SQ FT
1'-0" Deep Upper Cabinet	18.2 FT
Backsplash Tile	18.0 SQ FT
Backsplash Tile	20.6 SQ FT





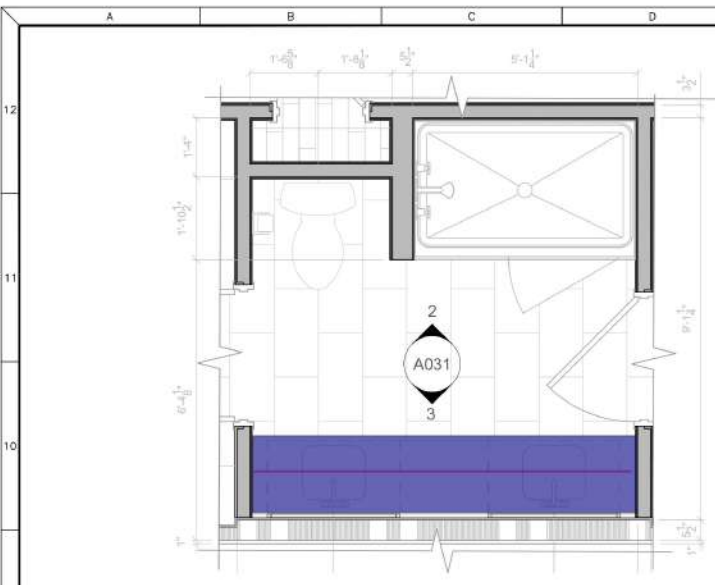


7 BATH TYPE 3 - FLOOR PLAN (UNIT B1C)		8 BATH TYPE 3, ELEVATION - 7			
DWG #		REFERENCE DRAWINGS		REV	
				DATE: 09/18/2023	
				DESCRIPTION: ISSUED FOR PERMIT	
				BY: MR	
				CHK: GM	
				APR: GM	
				DRAWN BY: MR	
				CHECKED BY: GM	
				ENGINEER: GM	
				DATE: 03/13/2023	
				MTS PROJECT NO.: 29903	
				SCALE: 1/2"=1'-0"	
				DRAWING TITLE: TOILET DETAILS	
				DRAWING NUMBER: A 048	
				REV: 0	

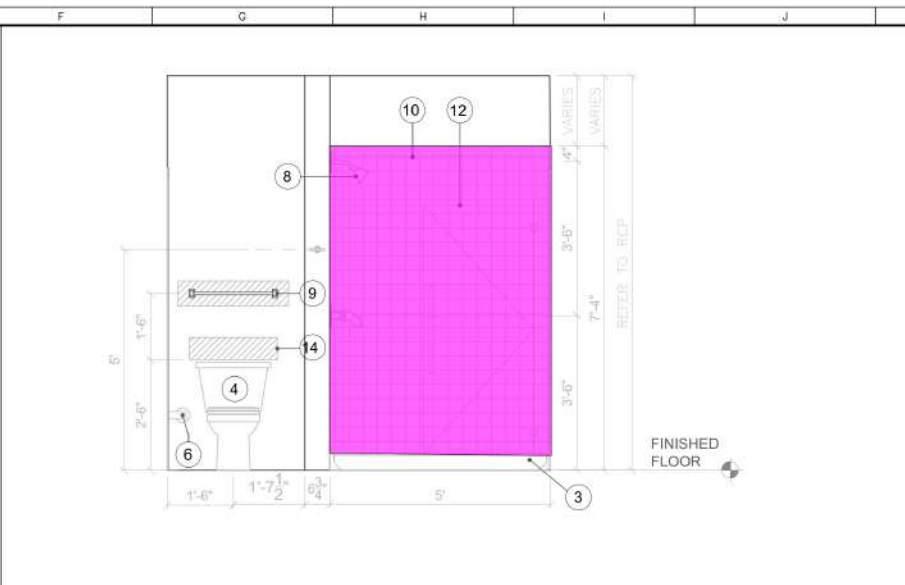
APARTMENT AT MARVIDA  
21233 WEST RD,  
CYPRESS, TX 77433

**MTS ENGINEERING & DESIGN**  
9950 WESTPARK DR. SUITE #426  
HOUSTON TEXAS 77063  
(281) 404-4438 (281) 253-4849  
TBPE NO. 18844 , TBAE NO. 3853

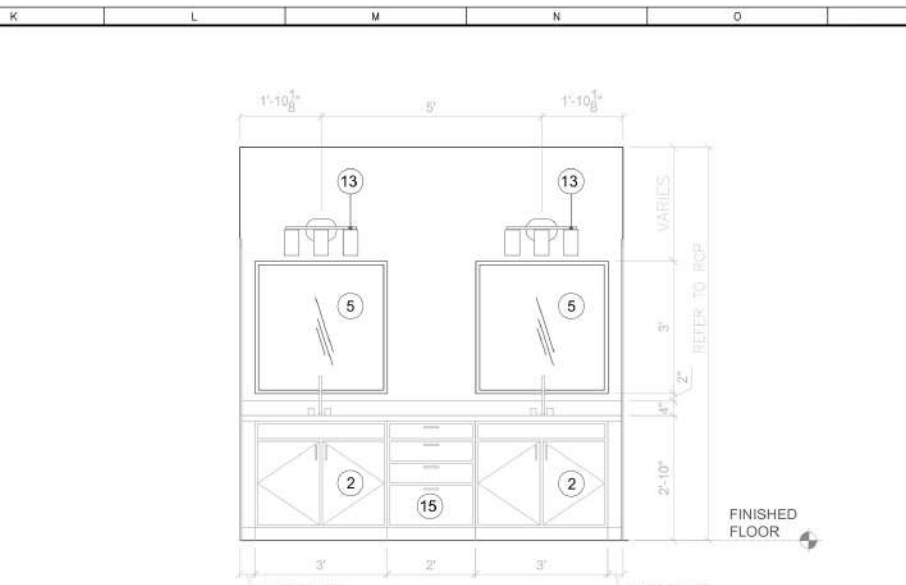




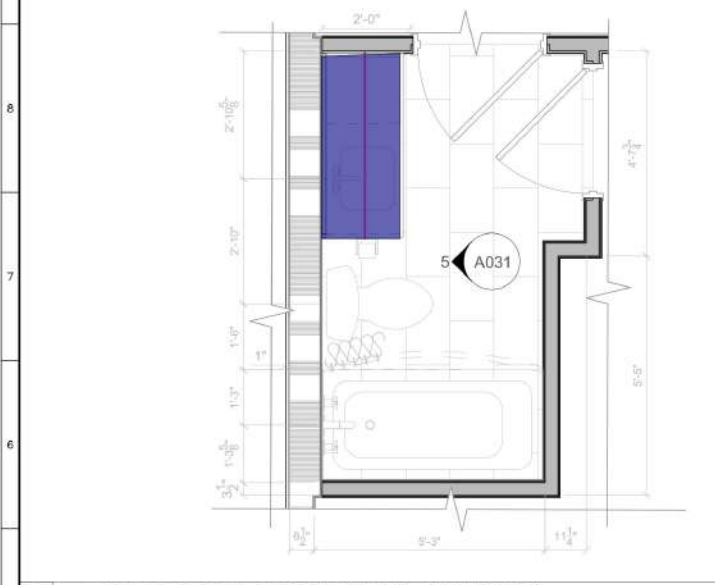
1 BATH TYPE 4 - FLOOR PLAN (UNIT B1B)



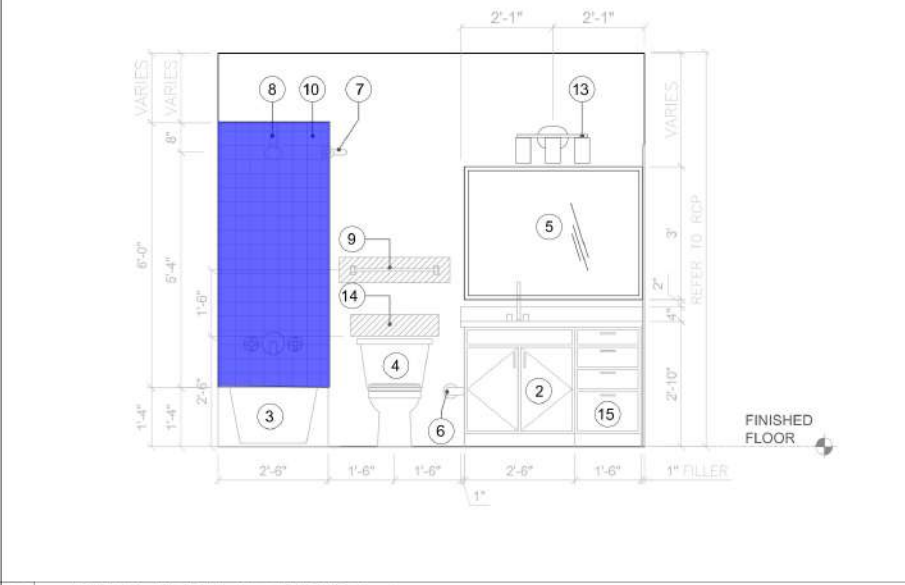
2 BATH TYPE 4, ELEVATION - 2



3 BATH TYPE 4, ELEVATION - 3



4 BATH TYPE 5 - FLOOR PLAN (UNIT B1B)



5 BATH TYPE 5, ELEVATION - 5

- Countertop
- Countertop
- 2'-0" Deep Base Cabinet
- Countertop
- 2'-0" Deep Base Cabinet
- Shower Tile
- Shower Tile

- 0.0 SQ FT
- 27.0 SQ FT
- 11.4 FT
- 13.2 SQ FT
- 5.7 FT
- 27.1 SQ FT
- 62.5 SQ FT

**LOCATION NOTE:-**  
CONTRACTOR SHALL TAKE SPECIAL CARE IN THE LAYOUT OF HIS/HER WORK & IN VERIFICATION OF ANY EXISTING CONDITIONS & DIMENSIONS. THE COORDINATION & ALIGNMENT OF THE WORK WITH ITSELF & ADJACENT WORKS IS OF PRIMARY IMPORTANCE & SHOULD TAKE PRECEDENCE OVER WRITTEN DIMENSIONS. ESPECIALLY APPROXIMATE DIMENSIONS THE INSTALLATION CONTRACTOR SHALL LAYOUT HIS WORKS & VERIFY TO INSURE ALIGNMENT & FIT. HE WILL REPORT ANY DISCREPANCIES TO THE PROJECT SUPERINTENDENT AND ARCHITECT.

1. DEVICES INSTALLED BY SEPARATE TRADES INSTALLED IN THE SAME LOCATION, SHALL BE MOUNTED IN A CONFIGURATION ACCEPTABLE TO THE ARCHITECT.

2. WHEN IN DOUBT, CHECK WITH ARCHITECT / ENGINEER PRIOR TO ROUGH-IN. ALL COSTS TO CORRECT DEVIATIONS FROM THESE PRINCIPLES WILL BE THE RESPONSIBILITY OF THE INSTALLING CONTRACTOR.

HARRIS COUNTY ENGINEERING DEPARTMENT - PERMITS OFFICE  
REVIEWED FOR CODE COMPLIANCE  
Reviewer: S. Vaughn  
All code deficiencies found in the field shall be corrected and made compliant prior to the Certificate Of Compliance being issued.  
04/12/2024 2:01:57 PM

- NOTE :-**
- 1. BATH TUB.
  - 2. VANITY CABINET W/SINK.
  - 3. SHOWER.
  - 4. WATER CLOSET, STD. HT.
  - 5. FRAMELESS MIRROR.
  - 6. TOILET PAPER HOLDER.
  - 7. SHOWER CURTAIN ROD @ 6'-4" A.F.F.
  - 8. SHOWER HEAD @ 7'-2" A.F.F.
  - 9. 12" TOWEL BAR @ 48" A.F.F.
  - 10. 4" x 4" TILE
  - 11. SOAP DISH
  - 12. GLASS SHOWER DOOR
  - 13. LIGHT FIXTURE (SEE ELECTRICAL).
  - 14. GRAB BAR REINFORCEMENT, BTWN. 2'-6" MAX A.F.F. & 3'-2" MIN. A.F.F.
  - 15. CABINET.











1 BACK ELEVATION  
A 052 SCALE: 1" = 30'-0"



2 BACK ELEVATION - BUILDING -1  
A 052 SCALE: 1/16" = 1'-0"



3 BACK ELEVATION - BUILDING -2  
A 052 SCALE: 1/16" = 1'-0"

"02" Side Mounted Metal Railing	589.4 FT
"02" Side Mounted Metal Railing	589.4 FT
"3" Metal Coping	482.3 FT
"3" Metal Coping	482.3 FT
"08" Stucco Field Color	15695.8 SQ FT
"08" Stucco Field Color	15695.8 SQ FT
"09" Stucco Acent Color	2581.0 SQ FT
"09" Stucco Acent Color	2633.2 SQ FT
"15" Cementious Trim Board @ Balcony	200.3 FT
"15" Cementious Trim Board @ Balcony	200.3 FT
"10" Cementious Panel Lap Siding/Alternating Expousre	266.8 SQ FT
"10" Cementious Panel Lap Siding/Alternating Expousre	266.8 SQ FT
"13" Cementious Panel Wood Like Panel	119.2 SQ FT
"13" Cementious Panel Wood Like Panel	119.2 SQ FT

MANUFACTURER	COLOR/FINISH
TBD	SW 7664 - STEELY GRAY
TBD	SW 7020 - BLACK FOX
SEE SPECIFICATIONS	
CERTAINT	WEATHERBOARD-CEDAR
	SW 7020 - BLACK FOX
	SW 7020 - BLACK FOX
	SW 7020 - BLACK FOX
	SW 7020 - BLACK FOX
	SW 7020 - BLACK FOX

- NOTES:
1. REFER TO SITE PLAN FOR BUILDING ORIENTATION
  2. ALL TOILET AND DRYER EXHAUST VENT CAPS SHALL BE PAINTED TO MATCH ADJACENT SURFACE.
  3. ALL EXPOSED SLAB EDGES SHALL BE PAINTED TO MATCH ADJACENT SURFACES.
  4. BOARD AND BATTEN SPACING RANGING FROM 1'-2" - 1'-5" WITH BATTENS ALIGNING WITH WINDOW TRIM.
  5. EXPOSED LAP SIDING SPACING 8"
  6. EXPOSED SPACING OF ALTERNATIVE LAP SIDING 10", 4", 4"



CHECKED BY:	ENGINEER:	DATE:	MTS PROJECT NO.:
GM	GM	03/13/2023	29903
DRAWING TITLE:		DRAWING NUMBER:	REV.
BUILDING ELEVATION		A 052	0

APARTMENT AT MARVIDA  
21233 WEST RD,  
CYPRESS, TX 77433



MTS ENGINEERING & DESIGN  
9950 WESTPARK DR. SUITE #426  
HOUSTON TEXAS 77063  
(281) 404-4438 (281) 253-4849  
TBPE NO. 18844 , TBAE NO. 3853