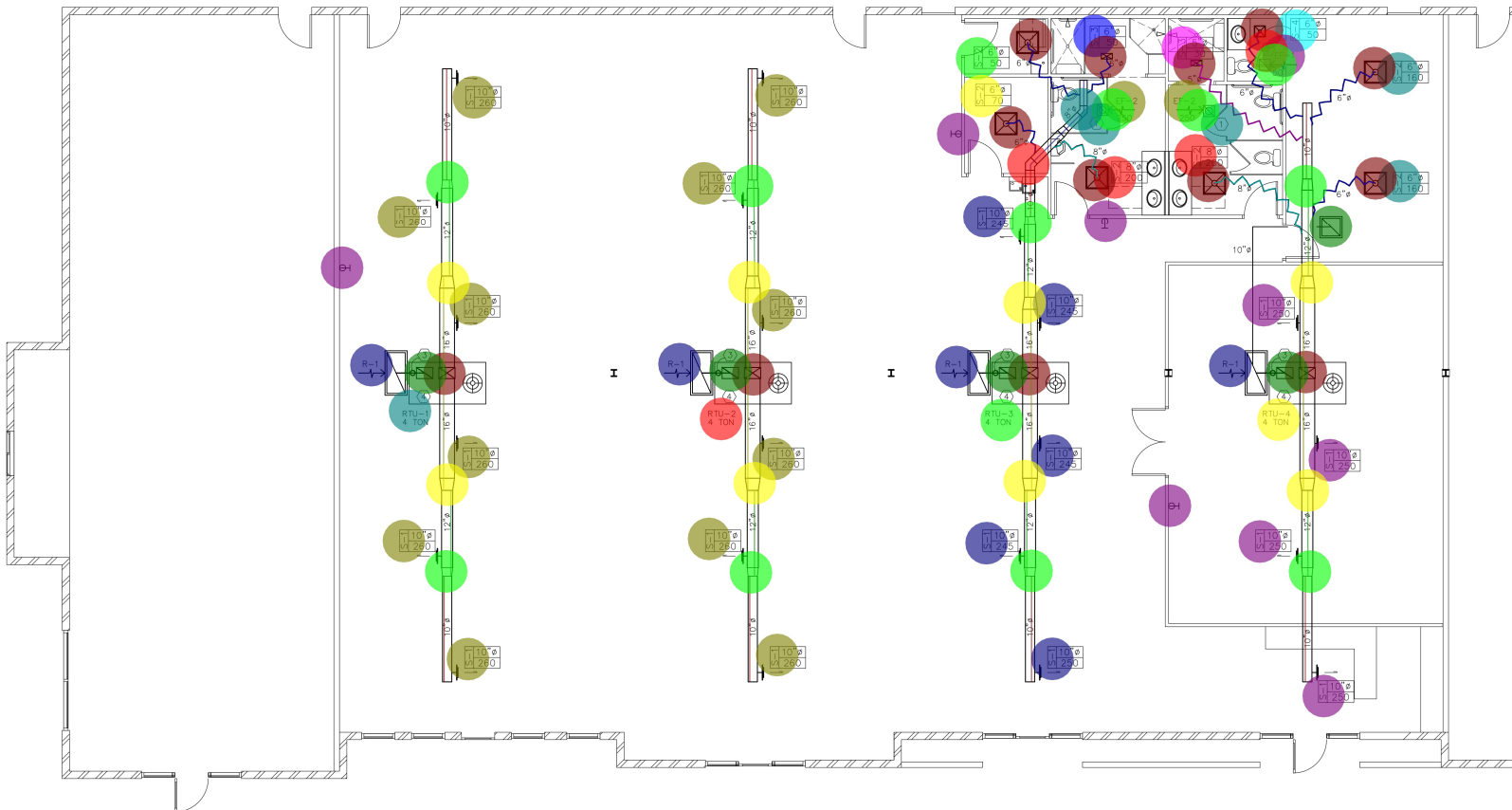


GENERAL MECHANICAL NOTES

1. MATERIALS AND INSTALLATION OF ALL MECHANICAL EQUIPMENT SHALL CONFORM WITH ALL NATIONAL, STATE AND LOCAL CODES.
2. PROVIDE AND INSTALL DAMPERS, TURNING VANES AND SPLITTERS AS REQUIRED FOR EFFICIENT OPERATION AND AIR DISTRIBUTION.
3. EXHAUST FANS FURNISHED BY THIS CONTRACTOR, ELECTRICAL CONNECTIONS BY ELECTRICAL CONTRACTOR.
4. INSTALL FLEXIBLE CONNECTIONS AT UNIT ON SUPPLY AND RETURN AIR DUCTS.
5. AIR DUCTS NOT SHOWN ON PLAN, BUT IMPLIED AND NECESSARY FOR PROPER INSTALLATION SHALL BE CONSIDERED AS PART OF THE MECHANICAL CONTRACTORS RESPONSIBILITY.
6. PROVIDE VOLUME DAMPERS WITH LOCKING HANDLES IN BRANCH DUCTS WHEN ACCESSIBLE CEILINGS ARE USED M.C. SHALL SUPPLY VOLUME DAMPERS IN THE THROAT OF THE SUPPLY AIR DUCT.
7. CONSTRUCT ALL DUCT WORK IN ACCORDANCE WITH ASHRAE STANDARDS. ALL DUCTWORK SHALL BE INSULATED TO A MINIMUM OF R-6.
8. ALL FLEX DUCT TO HAVE A MINIMUM OF R-6 INSULATION.
9. THIS CONTRACTOR SHALL INSTALL ALL SCHEDULE 40 PVC CONDENSATE DRAINS IN ENCL. AREAS IN ALL EXPOSED AREAS.
10. PROVIDE CONDENSATE OVERFLOW DRAIN PAN IN ADDITION TO UNIT CONDENSATE DRAIN. OVERFLOW PAN, ALARM SHALL SHUT DOWN A/C UNIT AND EMIT AN AUDIBLE ALARM, ETC.
11. UNLESS OTHERWISE NOTED, ROUTE ALL TOILET EXHAUST THRU THE ROOF, SUPPLY AND JACK THAT IS COMPATIBLE WITH THE ROOFING TYPE.
12. ALL UNITS LARGER THAN 2000 CFM SHALL RECEIVE SMOKE DETECTOR IN SUPPLY AIR. SMOKE DETECTOR SHALL BE REQUIRED BY LOCAL AND STATE CODES, BECAUSE ALL AIR HANDLERS ARE 2000 CFM OR LARGER.
13. INSTALL SHEET METAL DUCT PER SMONA. RECTANGULAR SIZES TO HAVE EXTERIOR 1" IN INSULATION.
14. ALL FRESH AIR INTAKES SHALL BE A MINIMUM OF 15' AWAY FROM TOILET DISCHARGES.

NOTES BY SYMBOL

- ① 10" EXHAUST DUCT THROUGH ROOF, PROVIDE A CODE APPROVED ROOF VENT TERMINATION AND CONFORM WITH ROOF SYSTEM COMPLETE WITH RAIN CAP AND INSECT SCREEN
- ② 6" EXHAUST DUCT THROUGH ROOF, PROVIDE A CODE APPROVED ROOF VENT TERMINATION AND CONFORM WITH ROOF SYSTEM COMPLETE WITH RAIN CAP AND INSECT SCREEN
- ③ ROUTE 10" DUCT TO ROOF PENETRATION FOR FRESH AIR, PROVIDE RAIN HOOD AND INSECT SCREEN AT PENETRATION, PROVIDE BACK DRAFT DAMPER TO RESTRICT AIR MOVEMENT WHEN UNIT IS OFF
- ④ RUN 3/4" CONDENSATE DRAIN TO JANITOR SINK



S-1: SUPPLY AIR	12.0 EA	
S-1: SUPPLY AIR	5.0 EA	
S-1: SUPPLY AIR	4.0 EA	
S-2: SUPPLY AIR	2.0 EA	
S-2: SUPPLY AIR	2.0 EA	
S-2: SUPPLY AIR	1.0 EA	
S-2: SUPPLY AIR	1.0 EA	
S-3: SUPPLY AIR	1.0 EA	
S-3: SUPPLY AIR	1.0 EA	
S-4: SUPPLY AIR	1.0 EA	
SUPPLY AIR DI...	13.0 EA	
RETURN AIR DI...	5.0 EA	
EF-2: EXHAUST F	2.0 EA	
R-1: RETURN AIR	4.0 EA	
T: THERMOSTAT	4.0 EA	
RTU-1: ROOF TOF	1.0 EA	
RTU-4: ROOF TOF	1.0 EA	
RTU-3: ROOF TOF	1.0 EA	
RTU-2: ROOF TOF	1.0 EA	
6" FLEX DUCT	54.2 FT	
5" FLEX DUCT	16.8 FT	
8" FLEX DUCT	21.2 FT	
10" DUCT	69.1 FT	
12" DUCT	65.6 FT	
16" DUCT	74.2 FT	
8" DUCT	10.1 FT	
EF-1: EXHAUST F	1.0 EA	
NOTES 1: 10" E...	2.0 EA	
NOTES 2: 6" EX...	1.0 EA	
RETURN AIR FL...	3.0 EA	
8" TRANSITION...	1.0 EA	
8" TRANSITION...	1.0 EA	
12" TRANSITIO...	8.0 EA	
16" TRANSITIO...	8.0 EA	

1 MECHANICAL PLAN
M.1.1 SCALE: 3/16" = 1'-0"

ALL LIGHTS SHALL BE EQUAL TO MANUFACTURE BELOW, MAY SUBSTITUTE, SUBMIT CUT SHEETS FOR ALTERNATIVE SELECTIONS

MARK	DESCRIPTION	LAMPS				WATTS PER FIXTURE	MANUFACTURER & MODEL
		TYPE	VOLT	COLOR	LUMENS		
A	2'X2' LAY-IN LED LIGHT	LED	MVOLT 120	4000K	3300	31	LITHONIA: 2GTL 233L 2x4 LAY-IN LED
B	6" RECESSED CAN - LED WET LOCATIONS	LED	MVOLT 120	4000K	1190	14	LITHONIA: WF6 LED 40K MVOLT 90CRI MB
C	HIGH BAY LED 16" ROUND	LED	MVOLT 120	4000K	18,000	132	LITHONIA: CPRB 18LM MVOLT 40K 80CRI DWH
D	120" CEILING FAN NO LIGHT KIT	FAN	120 18	-	-	110	COMMERCIAL ELECTRIC TO TITANIUM FAN MODEL # AK366-TM
E	96" CEILING FAN NO LIGHT KIT	FAN	120 18	-	-	110	COMMERCIAL ELECTRIC B TITANIUM FAN MODEL # AK366A-TM
X	SURFACE EXIT LIGHT	LED	120	-	-	1.6	LITHONIA: CONTRACTOR SELECT LDM QUANUM LED EXIT SIGN
X2	CEILING MTD DUAL SIDED EXIT LIGHT W/ ARROWS	LED	120	-	-	1.6	LITHONIA: LRP 2 RW DA 120V - DOUBLE SIDED CEILING MOUNTED W/ ARROW POINTING TOWARDS EXIT DOOR
EM	SURFACE WALL OR CEILING MOUNTED EGRESS LIGHT	LED	120	-	-	1.1	LITHONIA: ELM2L PROVIDES 90 MIN OF ILLUMINATION

IECC 2015 LIGHTING CONTROLS

ALL LIGHTING CONTROLS SHALL BE INSTALLED AND OPERATE PER THE 2015 IECC. OCCUPANCY/VACANCY SENSORS SHALL FUNCTION PER IECC C405.2.1.1 WITH MANUAL ON AND TIME OFF WITHIN 30 MINUTES. FIXTURES WITHIN THE DAYLIGHT ZONES SHALL BE PROVIDED WITH CONTROLS TO FUNCTION PER IECC C405.2.3 WITH AUTOMATIC DAYLIGHT RESPONSIVE CONTROLS.

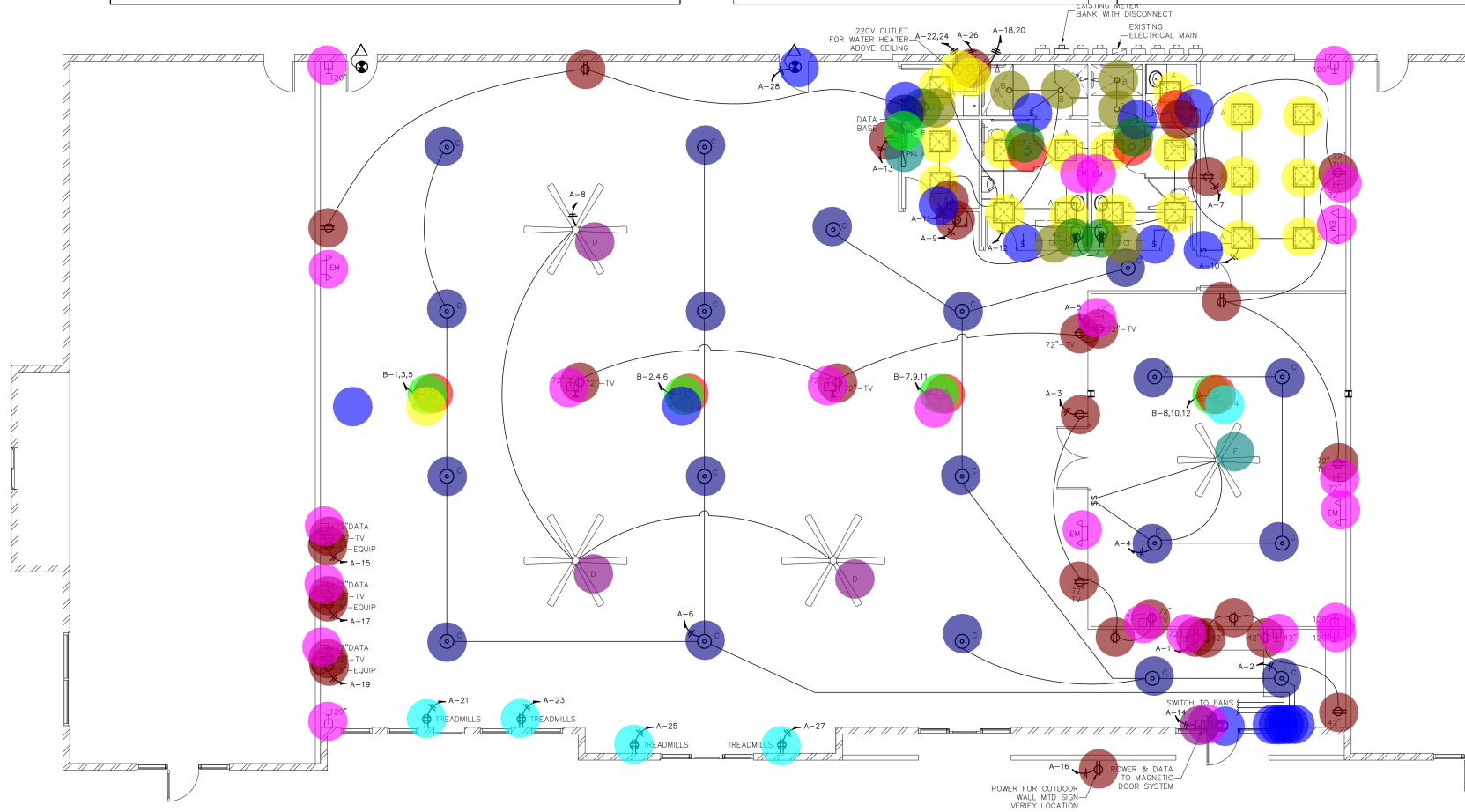
NOTES BY SYMBOL

- PROVIDE AND INSTALL LINE VOLTAGE OCCUPANCY SENSOR/FAN SWITCH. SENSOR SWITCH FOR TOILET LIGHTING AND EXHAUST FAN. USE SENSOR SWITCH DUAL TECHNOLOGY, DUAL RELAY, #WSX PDT 2P FAN OR EQUAL.
- CONTROL EXHAUST FAN WITH LIGHTING CIRCUIT AND OCCUPANCY SENSOR. SET EXHAUST FAN RELAY POLE #2 TO MINIMUM FAN RUN TIME PER ASHRAE 62.2.
- NIGHT LIGHT: BYPASS SWITCH TO REMAIN ON, NO BATTERY PACK
- ALL EXIT AND EMERGENCY LIGHTING ON CIRCUIT A-28
- OUTDOOR EMERGENCY EXIT LIGHT. LOCATE CENTERED, BOTTOM OF FIXTURE 6" TO 12" ABOVE DOOR FRAME.
- USE FIRE RATED ELECTRICAL BOX FOR ANY PLUGS, SWITCHES OR DATA

GENERAL ELECTRICAL NOTES

- FIXTURES AS PER SCHEDULE OR APPROVED EQUAL.
- FIXTURES SHALL BE COMPLETE WITH LAMPS.
- THE ELECTRICAL CONTRACTOR SHALL PROVIDE ALL LABOR AND MATERIALS REQUIRE POWER TO ALL MECHANICAL EQUIPMENT.
- ALL WIRING, CONDUIT, LABOR AND MATERIALS NOT SHOWN ON PLAN, BUT NECESSARY OPERATIONS OF THE ELECTRICAL SYSTEM SHALL BE CONSIDERED AS PART OF THE RESPONSIBILITY.
- THE ELECTRICAL CONTRACTOR SHALL COORDINATE AND INSTALL ALL CONDUIT REQUIRED.
- ALL WORK AS PER GENERAL SPECIFICATIONS AND ALL NATIONAL, STATE AND LOCAL.
- THE ELECTRICAL CONTRACTOR SHALL VISIT THE JOB SITE PRIOR TO SUBMITTING A.
- THE ELECTRICAL CONTRACTOR SHALL PERSONALLY CONTACT THE POWER COMPANY COORDINATE THE INSTALLATION OF THE MAIN ELECTRICAL SERVICE AND TRANSFORM BUILDING.
- THE ELECTRICAL CONTRACTOR SHALL SUPPLY AND INSTALL ALL FIRE ALARM DEVICE APPLICABLE CODES & PROVIDE A WORKING SYSTEM, DEVICES SHOWN ON PLANS A.
- THE ELECTRICAL CONTRACTOR SHALL PROVIDE A 200 AMP SINGLE PHASE TEMPORARY WEATHER PROOF OUTLETS. COORDINATE LOCATION WITH POWER COMPANY. INCLUDE SERVICE IN THE BASE BID. REMOVE TEMP SERVICE AFTER MAIN SERVICE BECOMES.
- THE ELECTRICAL CONTRACTOR SHALL SUPPLY AND INSTALL TEMPORARY CONSTRUCTION CITY MINIMUM LIGHTING LEVELS IN THE BASE CONTRACT.
- ALL ELECTRICAL EQUIPMENT W/ A MICRO PROCESSOR INCLUDING, BUT NOT LIMITED REGISTERS, & A/V EQUIPMENT SHALL HAVE A FULL SIZE ISOLATED GROUND.

- A: 2'X2' 18.0 EA
- X1: SU 3.0 EA
- EM: SL 6.0 EA
- DU... 30.0 EA
- DUP... 3.0 EA
- B: 6" R 4.0 EA
- C: HIG 19.0 EA
- D: 120" 3.0 EA
- E: 96" (1.0 EA
- DISC... 4.0 EA
- MOT... 7.0 EA
- 240 ... 2.0 EA
- \$: S... 13.0 EA
- DATA 17.0 EA
- QUA... 4.0 EA
- EF-1... 1.0 EA
- EF-2... 2.0 EA
- GFCI... 3.0 EA
- DAT... 1.0 EA
- J: JU... 1.0 EA
- PNL-... 1.0 EA
- PNL-... 1.0 EA
- RTU-... 1.0 EA
- RTU-... 1.0 EA
- RTU-... 1.0 EA
- RTU-... 1.0 EA



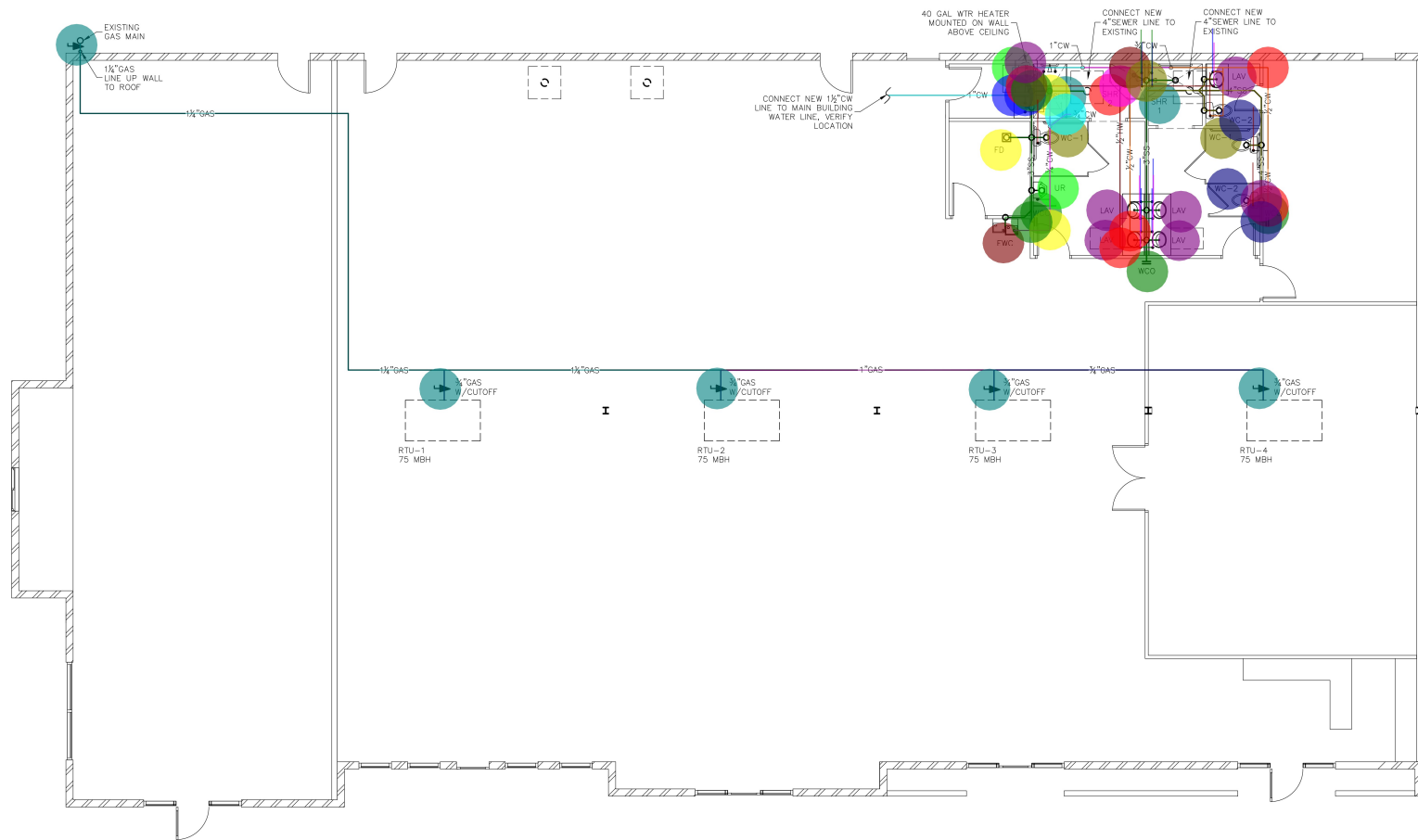
1 ELECTRICAL PLAN
E1.1 SCALE: 3/16" = 1'-0"

NOTES BY SYMBOL

- CONNECT 2" WATER TO EXISTING WATER MAIN VERIFY LOCATION AND SIZE OF EXISTING WATER LINE. SEE SHEET MEP-1 FOR MORE INFORMATION.
- INSTALL NEW DOUBLE CLEAN-OUT IN EXISTING SANITARY SEWER PRIOR TO ENTERING BUILDING. VERIFY SIZE AND LOCATION.
- CONNECT NEW 4" SS TO NEW AEROBIC SEPTIC SYSTEM (TO BE DESIGNED BY OTHERS) SEE SHEET MEP-1 FOR MORE INFORMATION.
- PROVIDE AND INSTALL 2" BUILDING SHUT-OFF VALVE IN VALVE BOX PRIOR TO ENTERING BUILDING.

GENERAL PLUMBING

- ALL WORK AS PER GENERAL SPECIFICATIONS.
- FOR HOT AND COLD WATER SYSTEMS, SEE SHEET ME-1 FOR MORE INFORMATION.
- ALL FIXTURES USED SHALL BE AS SHOWN ON THIS SHEET.
- ALL FIXTURES SHALL BE INSTALLED IN ACCORDANCE WITH THE MANUFACTURER'S INSTRUCTIONS.
- ALL VENTS SHALL BE CONNECTED TO THE ROOF JACKS.
- ALL TOILET SEATS SHALL BE INSTALLED IN ACCORDANCE WITH THE MANUFACTURER'S INSTRUCTIONS.
- TO FACILITATE THE CLEANING OF THE SANITARY SEWER LINES, THE CONTRACTOR SHALL PROVIDE CLEAN-OUTS AT THE LOCATIONS ALWAYS SHOWN IN THIS SHEET.
- CONTRACTOR SHALL VERIFY THE LOCATION AND DEPTH OF ALL EXISTING SANITARY SEWER LINES.
- LAVATORIES INTENDED TO BE USED BY DISABLED PERSONS SHALL BE INSTALLED IN ACCORDANCE WITH THE ADA REQUIREMENTS.
- ALL LAVATORIES SHALL HAVE A LIMITING DEVICE ON THE HOT WATER SUPPLY LINE TO PREVENT SCALDING.
- AS-BUILT "RED-MARKED" LOCATIONS SHALL BE SHOWN ON THIS SHEET.
- FIXTURES INDICATED ON THIS SHEET SHALL BE INSTALLED IN ACCORDANCE WITH THE MANUFACTURER'S INSTRUCTIONS.



EWC: BI - LEVEL WA	1.0 EA	
WCO: WALL CLEA...	3.0 EA	
WC-1: WATER CLOS	2.0 EA	
WC-2: WATER CLOS	2.0 EA	
LAV: LAVATORY (DR	5.0 EA	
SHR-1: ADA SHOWE	2.0 EA	
SHR-2: CORNER SH	1.0 EA	
UR: URINAL - VITRE	1.0 EA	
FD: FLOOR DRAIN (1.0 EA	
1/2" NEW COLD ...	45.7 FT	
3/4" COLD WATER	27.2 FT	
1" COLD WATER	22.9 FT	
1/2" HOT WATER	35.1 FT	
3" SS: NEW SANI...	52.1 FT	
4" SS: NEW SANIT...	30.6 FT	
3/4" GAS PIPE	35.9 FT	
1" GAS PIPE	25.2 FT	
1 1/4" GAS PIPE	89.2 FT	
1/2" ELBOW	5.0 EA	
1" ELBOW	1.0 EA	
3/4" ELBOW	2.0 EA	
1" TEE BEND	2.0 EA	
1/2" TEE BEND	1.0 EA	
3/4" (45 DEGREE ...	1.0 EA	
3/4"X3/4"X1/2" TE...	1.0 EA	
3" ELBOW	2.0 EA	
3" (45 DEGREE B...	1.0 EA	
4" ELBOW	1.0 EA	
4" TEE BEND	1.0 EA	
1/2" CW COLD W...	20.0 FT	
1/2" HW HOT WAT...	20.0 FT	
WC: WATER CLO...	16.0 FT	
3/4" SHOWER COL...	8.0 FT	
1/2" SHOWER HOT...	8.0 FT	
WATER HEATER: ...	1.0 EA	
3/4" GAS PLUG VA...	5.0 EA	

PLUMBING PLAN
SCALE: 3/16" = 1'-0"